



952F EXCAVATOR

ALL NEW
F SERIES

Engine	Cummins X12
Net Power	282 kW (378 hp)
Bucket Capacity	2.6-3.2 m ³ (3.4-4.2 yd ³)
Operating Weight	51,000 kg (112,455 lbs)
	54,300 kg (119,711 lbs) (With adjustable undercarriage)



TOUGH WORLD. TOUGH EQUIPMENT.

SPECIFICATIONS



OPERATING WEIGHT

51,000 kg (112,455 lbs)
54,300 kg (119,711 lbs) (With adjustable undercarriage)

Operating weight includes coolant, lubricants, full fuel tank, cab, standard shoes, boom, arm, bucket and operator 75 kg (165 lbs).

Bucket Capacity 2.6-3.2 m³ (3.4-4.2 yd³)

ENGINE

Description

Cummins EU Stage V, 6-cylinder straight Variable-Geometry Turbocharger (VGT), high pressure common rail, electronically controlled direct injection.
Air cleaner: Cummins direct flow air filter.
Cooling system: Charge air cooler.

Emission rating EU Stage V

Engine manufacturer Cummins

Engine model X12

Aspiration Variable-Geometry Turbocharger (VGT)

Charged air cooling Aftercooler

Cooling fan drive Viscous clutch

Displacement 11.8 L (3.12 gal)

Engine output - net (SAE J1349 / ISO 9249) 282 kW (378 hp) @ 2,100 rpm

Engine output - rated (SAE J1995 / ISO 14396) 298 kW (400 hp) @ 2,100 rpm

Maximum torque 2,034 N·m (1,500 lbf·ft) @ 1,400 rpm

Bore x Stroke 132 x 144 mm (5.2" x 5.7")

ELECTRIC SYSTEM

System Voltage 24 V

Batteries 2 x 12 V

Alternator 24 V - 70 A

Start motor 24 V - 7.5 kW

HYDRAULIC SYSTEM

Main pump

Type Two variable displacement piston pumps

Maximum flow 2 x 380 L/min (2 x 100 gal/min)

Pilot pump

Type Gear pump

Maximum flow 15 L/min (4 gal/min)

Relief valve setting

Implement 34.3 / 37.2 MPa (4,975 / 5,394 psi)

Travel circuit 34.3 MPa (4,975 psi)

Slew circuit 32.4 MPa (4,699 psi)

Pilot circuit 3.9 MPa (566 psi)

Hydraulic cylinders

Boom Cylinder - Bore x Stroke $\Phi 165 \times 1,560$ mm ($\Phi 6.5" \times 5.1"$)

Arm Cylinder - Bore x Stroke $\Phi 190 \times 1,980$ mm ($\Phi 7.5" \times 6.6"$)

Bucket Cylinder - Bore x Stroke $\Phi 170 \times 1,260$ mm ($\Phi 6.7" \times 4.1"$)

SWING SYSTEM

Description

Planetary gear reduction driven by high torque axial piston motor, with oil disk brake. Swing parking brake resets within five seconds after swing pilot controls return to neutral.

Swing speed 8.5 rpm

Swing torque 191,900 N·m (141,526 lbf·ft)

SOUND PERFORMANCE

Interior Sound Power Level (ISO 6396) 72 dB(A)

Exterior Sound Power Level (ISO 6395) 107 dB(A)

UNDERCARRIAGE

Track shoe each side 50
53 (With adjustable undercarriage)

Link pitch 228 mm (9")

Shoe width, triple grouser 600 / 700 / 800 / 900 mm (24" / 28" / 32" / 35")

600 mm (24") (With adjustable undercarriage)

Bottom rollers each side 9

Top rollers each side 2
3 (With adjustable undercarriage)

SERVICE CAPACITIES

Fuel tank 700 L (185 gal)

Engine oil 42 L (11.1 gal)

Final drive (each) 15 L (4 gal)

Swing drive 5.3 x 2 L (1.4 x 2 gal)

Cooling system 50 L (13.2 gal)

Hydraulic reservoir 230 L (60.8 gal)

Hydraulic system total 420 L (111 gal)

DEF tank 65 L (17.2 gal)

DRIVE AND BRAKES

Description

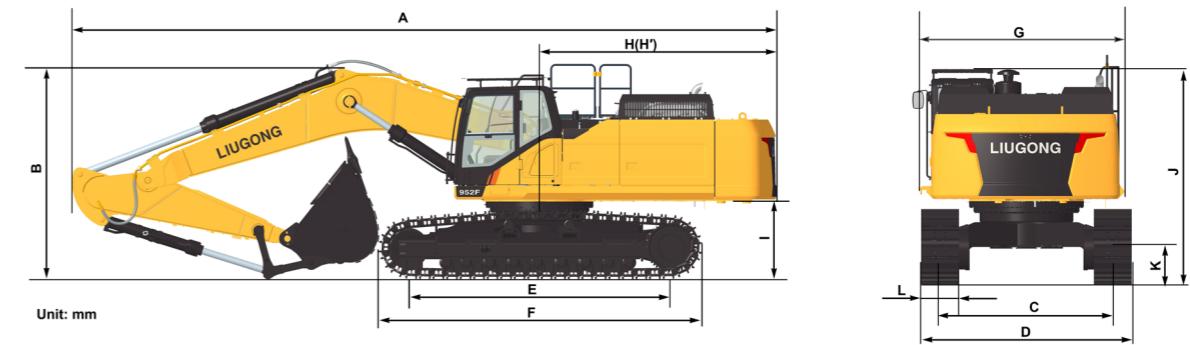
2-speed axial piston motors with oil disk brakes. Steering controlled by two hand levers with pedals.

High: 5.4 km/h (3.4 mph)
Low: 3.2 km/h (2.0 mph)

Max. travel speed High: 5.1 km/h (3.2 mph)
Low: 3.0 km/h (1.9 mph)
(With adjustable undercarriage)

Gradeability 35°/70%

Max. drawbar pull 386 kN (86,772 lbf)
410 kN (92,172 lbf) (With extendable track frame)



DIMENSIONS

DIMENSIONS	952F	
Boom	7,060 mm (23'2")	6,500 mm (21'4")
Arm Options	2,900 mm (9'6")	2,550 mm (8'4")
A Shipping Length	12,500 mm (41'0")	11,960 mm (39'3")
B Shipping Height - Top of Boom	3,970 mm (13'0") (bucket)	3,735 mm (12'3") (bucket)
C Track Gauge	2,740 mm (8'12")	
D Undercarriage Width- 600 mm (24") shoes	3,340 mm (10'11")	
700 mm (28") shoes	3,440 mm (11'3")	
800 mm (32") shoes	3,540 mm (11'7")	
900 mm (35") shoes	3,640 mm (11'11")	
E Length to Center of Rollers	4,430 mm (14'6")	
F Track Length	5,470 mm (17'11")	
G Overall Width of Upper Structure	3,110 mm (10'2") (including protective side beam)	
H Tail Swing Radius	4,015 mm (13'2")	
I Counterweight Ground Clearance	1,325 mm (4'4")	
J Overall Height of Cab	3,415 mm (11'2") (with protective equipment)	
K Min. Ground Clearance	590 mm (1'8")	
L Track Shoe Width	600 mm (2'0")	

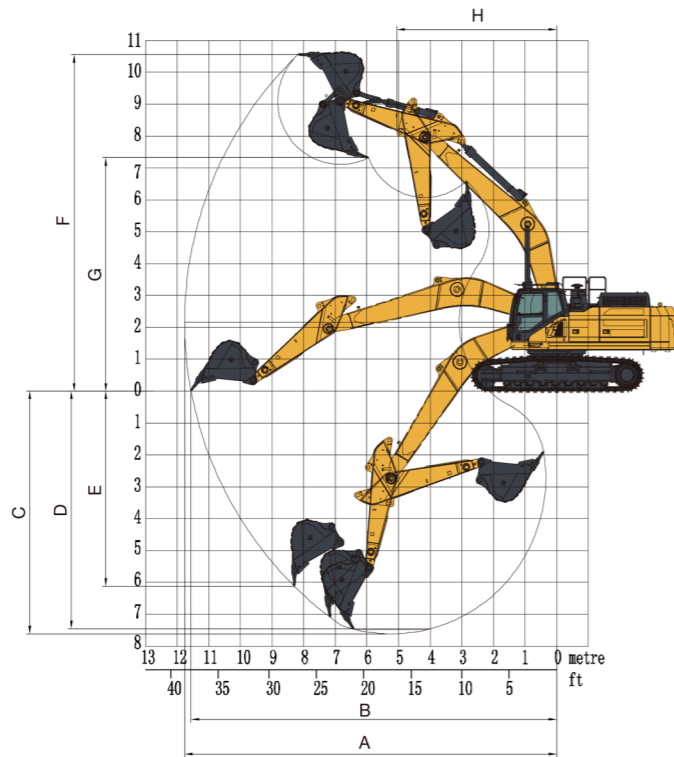


BOOM DIMENSIONS	952F	
	STANDARD	SHORT BOOM
Boom	7,060 mm (23'2")	6,500 mm (21'4")
Length	7,300 mm (23'11")	6,800 mm (22'4")
Height	1,900 mm (6'3")	2,000 mm (6'7")
Width	1063 mm (3'6") (with boom hinge pin1, 110 mm (4"))	
Weight	4,370 kg (9,634 lbs)	4,150 kg (9,149 lbs)

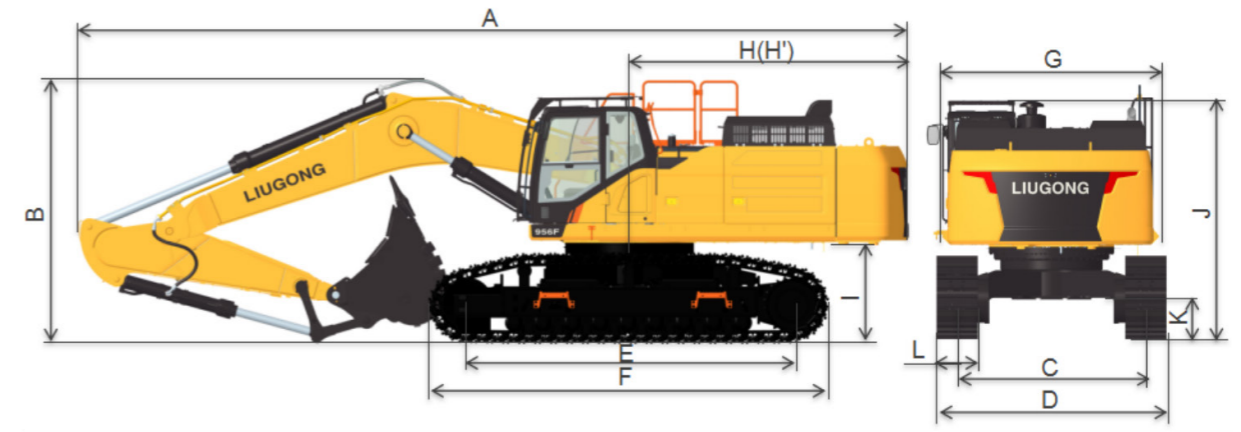
Cylinder, piping and pin included. Boom cylinder pin excluded.

ARM DIMENSIONS	952F	
	STANDARD	SHORT ARM
Arm	2,900 mm (9'6")	2,550 mm (8'4")
Length	4,376 mm (14'4")	3,873 mm (12'9")
Height	1,055 mm (3'6")	1,155 mm (3'9")
Width	600 mm (24") (with hinge pin)	
Weight	1,880 kg (4,145 lbs)	1,730 kg (3,814 lbs)

Cylinder, linkage and pin included.



WORKING RANGE		952F	
Boom Length		7,060 mm (23'2")	6,500 mm (21'4")
Arm Length		2,900 mm (9'6")	2,550 mm (8'4")
A. Max. Digging Reach		11,660 mm (38'3")	10,860 mm (35'8")
B. Max. Digging Reach on Ground		11,450 mm (37'7")	10,620 mm (34'10")
C. Max. Digging Depth		7,510 mm (24'8")	6,760 mm (22'2")
D. Max. Digging Depth, 2.44 m (8') Level		7,340 mm (24'1")	6,585 mm (21'7")
E. Max. Vertical Wall Digging Depth		6,060 mm (19'11")	5,080 mm (16'8")
F. Max. Cutting Height		10,500 mm (34'5")	9,965 mm (32'8")
G. Max. Dumping Height		7,400 mm (24'3")	6,915 mm (22'8")
H. Min. Front Swing Radius		5,050 mm (16'7")	4,775 mm (15'8")
Bucket Digging Force (ISO)	Normal	295 kN (66,319 lbf)	280 kN (62,946 lbf)
	Power Boost	315 kN (70,815 lbf)	300 kN (67,443 lbf)
Stick Digging Force (ISO)	Normal	255 kN (57,326 lbf)	265 kN (59,574 lbf)
	Power Boost	270 kN (60,698 lbf)	280 kN (62,947 lbf)
Bucket Capacity		2.6 m ³ (3.4 yd ³)	3.2 m ³ (4.2 yd ³)
Bucket Tip Radius		1,883 mm (6'2")	1,985 mm (6'6")



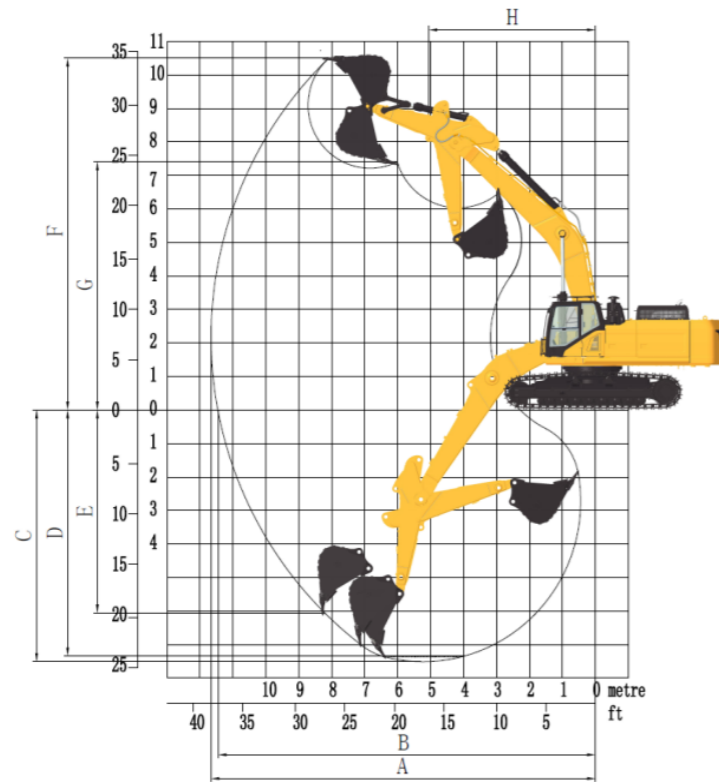
DIMENSIONS		952F(WITH ADJUSTABLE UNDERCARRIAGE)	
Boom		7,060 mm (23'2")	6,500 mm (21'4")
Arm Options		2,900 mm (9'6")	2,550 mm (8'4")
A Shipping Length		12,500 mm (41'0")	11,960 mm (39'3")
B Shipping Height – Top of Boom		3,970 mm (13'0") (bucket)	3,735 mm (12'3") (bucket)
C Track Gauge		2,390 / 2,890 mm (7'10" / 9'9")	
D Undercarriage Width– 600 mm (24") shoes		2,990 / 3,490 mm (9'10" / 11'5")	
E Length to Center of Rollers		4,750 mm (15'7")	
F Track Length		5,800 mm (19')	
G Overall Width of Upper Structure		3,110 mm (10'2") (including protective side beam)	
H Tail Swing Radius		4,015 mm (13'2")	
I Counterweight Ground Clearance		1,490 mm (4'11")	
J Overall Height of Cab		3,545 mm (11'8") (with protective equipment)	
K Min. Ground Clearance		775 mm (2'6")	
L Track Shoe Width		600 mm (2'0")	



952F(WITH ADJUSTABLE UNDERCARRIAGE)			952F(WITH ADJUSTABLE UNDERCARRIAGE)		
BOOM DIMENSIONS	STANDARD	SHORT BOOM	ARM DIMENSIONS	STANDARD	SHORT ARM
Boom	7,060 mm (23'2")	6,500 mm (21'4")	Arm	2,900 mm (9'6")	2,550 mm (8'4")
Length	7,300 mm (23'11")	6,800 mm (22'4")	Length	4,376 mm (14'4")	3,873 mm (12'9")
Height	1,900 mm (6'3")	2,000 mm (6'7")	Height	1,055 mm (3'6")	1,155 mm (3'9")
Width	1063 mm (3'6") (with boom hinge pin1, 110 mm (4"))		Width	715 mm (28") (with hinge pin)	
Weight	4,370 kg (9,634 lbs)	4,150 kg (9,149 lbs)	Weight	2,600 kg (5,732 lbs)	2,550 kg (5,622 lbs)

Cylinder, piping and pin included. Boom cylinder pin excluded.

Cylinder, linkage and pin included.



WORKING RANGE		952F(WITH ADJUSTABLE UNDERCARRIAGE)	
Boom Length		7,060 mm (23'2")	6,500 mm (21'4")
Arm Length		2,900 mm (9'6")	2,550 mm (8'4")
A. Max. Digging Reach		11,660 mm (38'3")	10,860 mm (35'8")
B. Max. Digging Reach on Ground		11,450 mm (37'7")	10,620 mm (34'10")
C. Max. Digging Depth		7,380 mm (24'3")	6,760 mm (22'2")
D. Max. Digging Depth, 2.44 m (8') Level		7,210 mm (23'8")	6,585 mm (21'7")
E. Max. Vertical Wall Digging Depth		5,930 mm (19'5")	5,080 mm (16'8")
F. Max. Cutting Height		10,630 mm (34'11")	9,965 mm (32'8")
G. Max. Dumping Height		7,530 mm (24'8")	6,915 mm (22'8")
H. Min. Front Swing Radius		5,050 mm (16'7")	4,775 mm (15'8")
Bucket Digging Force (ISO)	Normal	295 kN (66,319 lbf)	280 kN (62,946 lbf)
	Power Boost	315 kN (70,815 lbf)	300 kN (67,443 lbf)
Stick Digging Force (ISO)	Normal	255 kN (57,326 lbf)	265 kN (59,574 lbf)
	Power Boost	270 kN (60,698 lbf)	280 kN (62,947 lbf)
Bucket Capacity		2.6 m ³ (3.4 yd ³)	3.2 m ³ (4.2 yd ³)
Bucket Tip Radius		1,883 mm (6'2")	1,985 mm (6'6")

MACHINE WEIGHTS AND GROUND PRESSURE

	Operating weight	Ground pressure	Overall width	Operating weight	Ground pressure	Overall width
Shoe width	7.06 m (23'2") boom, 2.9 m (9'6") arm, 2.6 m ³ (3.4 yd ³) bucket, 10,800 kg (23,810 lbs) counterweight (other systems are standard configuration)			6.5 m (21'4") boom, 2.55 m (8'4") arm, 3.2 m ³ (4.2 yd ³) bucket, 10,800 kg (23,810 lbs) counterweight (other systems are standard configuration)		
600 mm (24")	51,000 kg (112,436 lbs)	85.9 kPa (12.5 psi)	3,340 mm (11'0")	50,800 kg (111,995 lbs)	85.6 kPa (12.4 psi)	3,340 mm (11'0")
700 mm (28")	51,600 kg (113,759 lbs)	86.9 kPa (12.6 psi)	3,440 mm (11'3")	51,400 kg (113,318 lbs)	86.6 kPa (12.6 psi)	3,440 mm (11'3")
800 mm (32")	52,200 kg (115,081 lbs)	87.9 kPa (12.7 psi)	3,540 mm (11'7")	52,000 kg (114,640 lbs)	87.6 kPa (12.7 psi)	3,540 mm (11'7")
900 mm (35")	52,800 kg (116,404 lbs)	88.9 kPa (12.9 psi)	3,640 mm (11'11")	52,600 kg (115,963 lbs)	88.6 kPa (12.8 psi)	3,640 mm (11'11")

MACHINE WEIGHTS AND GROUND PRESSURE (WITH ADJUSTABLE UNDERCARRIAGE)

	Operating weight	Ground pressure	Overall width	Operating weight	Ground pressure	Overall width
Shoe width	7.06 m (23'2") boom, 2.9 m (9'6") arm, 2.6 m ³ (3.4 yd ³) bucket, 12,000 kg (26,455 lbs) counterweight (other systems are standard configuration)			6.5 m (21'4") boom, 2.55 m (8'4") arm, 3.2 m ³ (4.2 yd ³) bucket, 12,000 kg (26,455 lbs) counterweight (other systems are standard configuration)		
600 mm (24")	54,300 kg (119,711 lbs)	86.4 kPa (12.5 psi)	2,990 / 3,490 mm (9'10"/11'5")	52,600 kg (115,963 lbs)	88.6 kPa (12.8 psi)	2,990 / 3,490 mm (9'10"/11'5")

BUCKET SELECTION GUIDE

Bucket type	Capacity	Cutting width	Weight	Teeth pcs	7.06 m (23'2") Boom	6.5 m (21'4") Boom
					2.9 m (9'6") Arm	2.55 m (8'4") Arm
HD Digging Bucket	2.6 m ³ (3.4 yd ³)	1,710 mm (5'7")	2,600 kg (5,732 lbs)	5	D	NA
HD Loading Bucket	2.8 m ³ (3.7 yd ³)	1,865 mm (6'1")	2,650 kg (5,842 lbs)	5	AB	BC
HD Loading Bucket	3.2 m ³ (4.2 yd ³)	2,080 mm (5')	2,910 kg (6,415 lbs)	5	NA	AB

The recommendations are given as a guide only, based on typical operation conditions.
Bucket capacity based on ISO 7451, heaped material with a 1:1 angle of repose.

Maximum material density:
A. 1,200-1,300 kg/m³ (2,023-2,191 lb/yd³): Coal, Caliche, Shale
B. 1,400-1,600 kg/m³ (2,360-2,697 lb/yd³): Wet earth and clay, limestone, sandstone
C. 1,700-1,800 kg/m³ (2,865-3,034 lb/yd³): Granite, wet sand, well blasted rock
D. 1,900 kg/m³ (3,203 lb/yd³): Wet mud, Iron ore
NA. Not applicable



Lifting capacity at the arm end without bucket.
For lifting capacity including bucket, weight of the bucket or the bucket with quick coupler must be deducted from the lifting capacities.
Lifting capacities are based on the machine standing on a firm, uniform supporting surface.



Rating over-front (Cf)



Rating over-side (Cs)

- Do not attempt to lift or hold any load that is greater than these rated values at their specified load radius and height. Weight of all accessories must be deducted from the above lifting capacities.
- The rated loads are in compliance with ISO 10567 Hydraulic Excavator Lift Capacity Rating Standard. They do not exceed 87% of hydraulic lifting capacity or 75% tipping load.
- Ratings at bucket lift hook.
- Lifting capacities are based on machine standing on level, firm and uniform ground.
- *Indicates the load is limited by hydraulic capacity rather than tipping capacity.
- Operator should be fully acquainted with the Operator's and Maintenance Instructions before operating this machine and rules for the safe operation of equipment should be adhered to at all times.

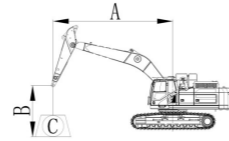
LIFTING CAPACITY

952F with 600 mm Shoes, 6,500 mm Boom, 2,550 mm Arm

A: Load radius
B: Load point height
C: Lifting capacity rating
Cf: Rating loads over front
Cs: Rating loads over side or 360°

Conditions:

Boom length: 6,500 mm
Arm length: 2,550 mm
Bucket: None
counterweight: 10,800 kg
Shoes: 600 mm triple grouser
Unit: kg



A (Unit: m)

B (m)	A (Unit: m)										MAX REACH	A (m)	
	3		4.5		6		7.5						
	Cf	Cs	Cf	Cs	Cf	Cs	Cf	Cs	Cf	Cs			
7.5	kg										*14,078	12,909	7
6.0	kg					*15,437	*15,437	*13,821	11,486	*13,535	10,351		8.0
4.5	kg			*22,145	*22,145	*16,990	15,461	*14,403	11,198	*13,366	9,285		8.5
3.0	kg			*25,726	21,751	*18,641	14,683	*15,154	10,827	*13,291	8,654		8.8
1.5	kg			*22,508	20,877	*19,670	14,097	*15,664	10,507	*13,316	8,509		8.8
GROUND LEVEL	kg			*25,644	20,726	*19,658	13,807	*15,579	10,322	*13,414	8,819		8.5
-1.5	kg	*22,392	*22,392	*23,383	20,868	*18,460	13,785	*14,486	10,322	*13,152	9,552		8.0
-3.0	kg	*22,693	*22,693	*19,667	*19,667	*15,699	14,019			*12,521	11,315		7.1
-4.5	kg			*13,323	*13,323					*10,304	*10,304		5.7

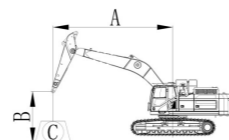
LIFTING CAPACITY

952F with 24" Shoes, 21'4" Boom, 8'4" Arm

A: Load radius
B: Load point height
C: Lifting capacity rating
Cf: Rating loads over front
Cs: Rating loads over side or 360°

Conditions

Boom length: 21'4"
Arm length: 8'4"
Bucket: None
counterweight: 23,810 lbs
Shoes: 24" triple grouser
Unit: lbs



A (Unit: ft)

B (ft)	A (Unit: ft)										MAX REACH	A (ft)	
	10		15		20		25						
	Cf	Cs	Cf	Cs	Cf	Cs	Cf	Cs	Cf	Cs			
25	lbs										*31,037	28,459	23
20	lbs					*34,032	*34,032	*30,470	25,323	*29,840	22,821		26
15	lbs			*48,820	*48,820	*37,457	34,087	*31,754	24,688	*29,467	20,470		28
10	lbs			*56,716	47,954	*41,096	32,371	*33,408	23,870	*29,302	19,078		29
5	lbs			*49,623	46,027	*43,366	31,078	*34,532	23,164	*29,357	18,759		29
GROUND LEVEL	lbs			*56,534	45,694	*43,339	30,438	*34,347	22,755	*29,573	19,442		28
-5	lbs	*49,366	*49,366	*51,551	46,005	*40,698	30,391	*31,937	22,756	*28,996	21,059		26
-10	lbs	*50,030	*50,030	*43,359	*43,359	*34,610	30,907			*27,604	24,945		23
-15	lbs			*29,373	*29,373					*22,716	*22,716		19

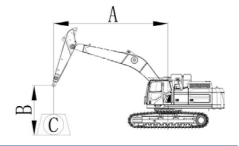
LIFTING CAPACITY

952F with 700 mm Shoes, 6,500 mm Boom, 2,550 mm Arm

A: Load radius
B: Load point height
C: Lifting capacity rating
Cf: Rating loads over front
Cs: Rating loads over side or 360°

Conditions

Boom length: 6,500 mm
Arm length: 2,550 mm
Bucket: None
counterweight: 10,800 kg
Shoes: 700 mm triple grouser
Unit: kg



A (Unit: m)

B (m)	A (Unit: m)										MAX REACH	A (m)		
	3		4.5		6		7.5							
	Cf	Cs	Cf	Cs	Cf	Cs	Cf	Cs	Cf	Cs				
7.5	kg										*14,078	13,122	7	
6.0	kg							*15,437	*15,437	*13,821	11,682	*13,535	10,532	8.0
4.5	kg			*22,145	*22,145	*16,990	15,722	*14,403	11,394	*13,366	9,452		8.5	
3.0	kg			*25,726	22,140	*18,641	14,944	*15,154	11,023	*13,291	8,814		8.8	
1.5	kg			*22,508	21,266	*19,670	14,357	*15,664	10,702	*13,316	8,670		8.8	
GROUND LEVEL	kg			*25,644	21,115	*19,658	14,067	*15,579	10,517	*13,414	8,986		8.5	
-1.5	kg	*22,392	*22,392	*23,383	21,257	*18,460	14,045	*14,486	10,517	*13,152	9,733		8.0	
-3.0	kg	*22,693	*22,693	*19,667	*19,667	*15,699	14,279			*12,521	11,524		7.1	
-4.5	kg			*13,323	*13,323					*10,304	*10,304		5.7	

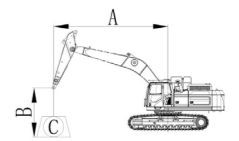
LIFTING CAPACITY

952F with 28" Shoes, 21'4" Boom, 8'4" Arm

A: Load radius
B: Load point height
C: Lifting capacity rating
Cf: Rating loads over front
Cs: Rating loads over side or 360°

Conditions

Boom length: 21'4"
Arm length: 8'4"
Bucket: None
counterweight: 23,810 lbs
Shoes: 28" triple grouser
Unit: lbs



A (Unit: ft)

B (ft)	A (Unit: ft)										MAX REACH	A (ft)		
	10		15		20		25							
	Cf	Cs	Cf	Cs	Cf	Cs	Cf	Cs	Cf	Cs				
25	lbs										*31,037	28,929	23	
20	lbs							*34,032	*34,032	*30,470	25,754	*29,840	23,219	26
15	lbs			*48,820	*48,820	*37,457	34,660	*31,754	25,119	*29,467	20,839		28	
10	lbs			*56,716	48,811	*41,096	32,945	*33,408	24,301	*29,302	19,432		29	
5	lbs			*49,623	46,884	*43,366	31,651	*34,532	23,595	*29,357	19,113		29	
GROUND LEVEL	lbs			*56,534	46,551	*43,339	31,012	*34,347	23,186	*29,573	19,811		28	
-5	lbs	*49,366	*49,366	*51,551	46,863	*40,698	30,965	*31,937	23,186	*28,996	21,457		26	
-10	lbs	*50,030	*50,030	*43,359	*43,359	*34,610	31,480			*27,604	25,407		23	
-15	lbs			*29,373	*29,373					*22,716	*22,716		19	



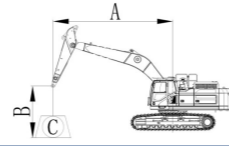
LIFTING CAPACITY

952F with 800 mm Shoes, 6,500 mm Boom, 2,550 mm Arm

A: Load radius
 B: Load point height
 C: Lifting capacity rating
 Cf: Rating loads over front
 Cs: Rating loads over side or 360°

Conditions:

Boom length: 6,500 mm
 Arm length: 2,550 mm
 Bucket: None
 counterweight: 10,800 kg
 Shoes: 800 mm triple grouser
 Unit: kg



A (Unit: m)

B (m)	A (Unit: m)										MAX REACH	A (m)
	3		4.5		6		7.5					
	Cf	Cs	Cf	Cs	Cf	Cs	Cf	Cs	Cf	Cs		
7.5	kg								*14,078	13,335		7
6.0	kg					*15,437	*15,437	*13,821	11,877	*13,535	10,712	8.0
4.5	kg			*22,145	*22,145	*16,990	15,982	*14,403	11,589	*13,366	9,620	8.5
3.0	kg			*25,726	22,529	*18,641	15,204	*15,154	11,218	*13,291	8,975	8.8
1.5	kg			*22,508	21,655	*19,670	14,617	*15,664	10,898	*13,316	8,830	8.8
GROUND LEVEL	kg			*25,644	21,504	*19,658	14,327	*15,579	10,713	*13,414	9,154	8.5
-1.5	kg	*22,392	*22,392	*23,383	21,646	*18,460	14,305	*14,486	10,713	*13,152	9,913	8.0
-3.0	kg	*22,693	*22,693	*19,667	*19,667	*15,699	14,539			*12,521	11,734	7.1
-4.5	kg			*13,323	*13,323					*10,304	*10,304	5.7

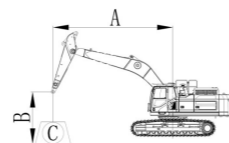
LIFTING CAPACITY

952F with 32" Shoes, 21'4" Boom, 8'4" Arm

A: Load radius
 B: Load point height
 C: Lifting capacity rating
 Cf: Rating loads over front
 Cs: Rating loads over side or 360°

Conditions

Boom length: 21'4"
 Arm length: 8'4"
 Bucket: None
 counterweight: 23,810 lbs
 Shoes: 32" triple grouser
 Unit: lbs



A (Unit: ft)

B (ft)	A (Unit: ft)										MAX REACH	A (ft)
	10		15		20		25					
	Cf	Cs	Cf	Cs	Cf	Cs	Cf	Cs	Cf	Cs		
25	lbs								*31,037	29,399		23
20	lbs					*34,032	*34,032	*30,470	26,185	*29,840	23,617	26
15	lbs			*48,820	*48,820	*37,457	35,234	*31,754	25,549	*29,467	21,209	28
10	lbs			*56,716	49,669	*41,096	33,519	*33,408	24,732	*29,302	19,787	2
5	lbs			*49,623	47,742	*43,366	32,225	*34,532	24,026	*29,357	19,468	29
GROUND LEVEL	lbs			*56,534	47,409	*43,339	31,586	*34,347	23,617	*29,573	20,181	28
-5	lbs	*49,366	*49,366	*51,551	47,720	*40,698	31,538	*31,937	23,617	*28,996	21,855	26
-10	lbs	*50,030	*50,030	*43,359	*43,359	*34,610	32,054			*27,604	25,868	23
-15	lbs			*29,373	*29,373					*22,716	*22,716	19

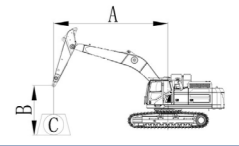
LIFTING CAPACITY

952F with 900 mm Shoes, 6,500 mm Boom, 2,550 mm Arm

A: Load radius
 B: Load point height
 C: Lifting capacity rating
 Cf: Rating loads over front
 Cs: Rating loads over side or 360°

Conditions

Boom length: 6,500 mm
 Arm length: 2,550 mm
 Bucket: None
 counterweight: 10,800 kg
 Shoes: 900 mm triple grouser
 Unit: kg



A (Unit: m)

B (m)	A (Unit: m)										MAX REACH	A (m)	
	3		4.5		6		7.5						
	Cf	Cs	Cf	Cs	Cf	Cs	Cf	Cs	Cf	Cs			
7.5	kg										*14,078	13,548	7
6.0	kg					*15,437	*15,437	*13,821	12,073	*13,535	10,893	8.0	
4.5	kg			*22,145	*22,145	*16,990	16,242	*14,403	11,784	*13,366	9,788	8.5	
3.0	kg			*25,726	22,918	*18,641	15,464	*15,154	11,414	*13,291	9,136	8.8	
1.5	kg			*22,508	22,044	*19,670	14,877	*15,664	11,093	*13,316	8,991	8.8	
GROUND LEVEL	kg			*25,644	21,893	*19,658	14,587	*15,579	10,908	*13,414	9,321	8.5	
-1.5	kg	*22,392	*22,392	*23,383	22,035	*18,460	14,566	*14,486	10,908	*13,152	10,094	8.0	
-3.0	kg	*22,693	*22,693	*19,667	*19,667	*15,699	14,800			*12,521	11,943	7.1	
-4.5	kg			*13,323	*13,323					*10,304	*10,304	5.7	

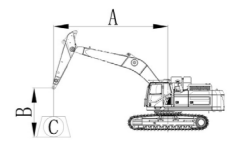
LIFTING CAPACITY

952F with 35" Shoes, 21'4" Boom, 8'4" Arm

A: Load radius
 B: Load point height
 C: Lifting capacity rating
 Cf: Rating loads over front
 Cs: Rating loads over side or 360°

Conditions

Boom length: 21'4"
 Arm length: 8'4"
 Bucket: None
 counterweight: 23,810 lbs
 Shoes: 35" triple grouser
 Unit: lbs



A (Unit: ft)

B (ft)	A (Unit: ft)										MAX REACH	A (ft)	
	10		15		20		25						
	Cf	Cs	Cf	Cs	Cf	Cs	Cf	Cs	Cf	Cs			
25	lbs										*31,037	29,869	23
20	lbs					*34,032	*34,032	*30,470	26,616	*29,840	24,015	26	
15	lbs			*48,820	*48,820	*37,457	35,807	*31,754	25,980	*29,467	21,578	28	
10	lbs			*56,716	50,526	*41,096	34,092	*33,408	25,163	*29,302	20,141	29	
5	lbs			*49,623	48,599	*43,366	32,798	*34,532	24,457	*29,357	19,822	29	
GROUND LEVEL	lbs			*56,534	48,266	*43,339	32,159	*34,347	24,048	*29,573	20,550	28	
-5	lbs	*49,366	*49,366	*51,551	48,578	*40,698	32,112	*31,937	24,048	*28,996	22,253	26	
-10	lbs	*50,030	*50,030	*43,359	*43,359	*34,610	32,628			*27,604	26,330	23	
-15	lbs			*29,373	*29,373					*22,716	*22,716	19	

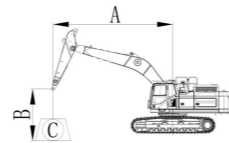


LIFTING CAPACITY

952F with 600 mm Shoes, 7,060 mm Boom, 2,900 mm Arm

A: Load radius
 B: Load point height
 C: Lifting capacity rating
 Cf: Rating loads over front
 Cs: Rating loads over side or 360°

Conditions:
 Boom length: 7,060 mm
 Arm length: 2,900 mm
 Bucket: None
 counterweight: 10,800 kg
 Shoes: 600 mm triple grouser
 Unit: kg



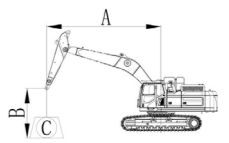
B (m)	A (Unit: m)												MAX REACH	A (m)	
	3		4.5		6		7.5		9						
	Cf	Cs	Cf	Cs	Cf	Cs	Cf	Cs	Cf	Cs	Cf	Cs			
9.0	kg												*12,829	*12,829	6.9
7.5	kg							*12,312	11,824				*12,143	10,415	8.1
6.0	kg							*12,751	11,600				*11,869	8,881	8.9
4.5	kg			*21,759	*21,759	*16,295	15,383	*13,607	11,202	*12,066	8,585	*11,789	8,028		9.4
3.0	kg					*18,105	14,522	*14,543	10,761	*12,465	8,373	*11,760	7,520		9.7
1.5	kg					*19,255	13,894	*15,235	10,389	*12,750	8,176	11,719	7,399		9.7
GROUND LEVEL	kg					*19,428	13,583	*15,424	10,158	*12,671	8,055	*12,002	7,630		9.4
-1.5	kg			*23,490	20,534	*18,628	13,527	*14,898	10,091			*11,818	8,068		9
-3.0	kg	*24,072	*24,072	*20,710	*20,710	*16,762	13,679	*13,296	10,211			*11,582	9,182		8.2
-4.5	kg	*18,555	*18,555	*16,337	*16,337	*13,238	*13,238					*10,685	*10,685		7

LIFTING CAPACITY

952F with 700 mm Shoes, 7,060 mm Boom, 2,900 mm Arm

A: Load radius
 B: Load point height
 C: Lifting capacity rating
 Cf: Rating loads over front
 Cs: Rating loads over side or 360°

Conditions:
 Boom length: 7,060 mm
 Arm length: 2,900 mm
 Bucket: None
 counterweight: 10,800 kg
 Shoes: 700 mm triple grouser
 Unit: kg



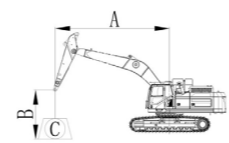
B (m)	A (Unit: m)												MAX REACH	A (m)	
	3		4.5		6		7.5		9						
	Cf	Cs	Cf	Cs	Cf	Cs	Cf	Cs	Cf	Cs	Cf	Cs			
9.0	kg												*12,829	*12,829	6.9
7.5	kg							*12,312	12,020				*12,143	10,592	8.1
6.0	kg							*12,751	11,796				*11,869	9,039	8.9
4.5	kg			*21,759	*21,759	*16,295	15,643	*13,607	11,398	*12,066	8,741	*11,789	8,177		9.4
3.0	kg					*18,105	14,782	*14,543	10,956	*12,465	8,530	*11,760	7,664		9.7
1.5	kg					*19,255	14,154	*15,235	10,585	*12,750	8,333	*11,823	7,542		9.7
GROUND LEVEL	kg					*19,428	13,843	*15,424	10,353	*12,671	8,212	*12,002	7,779		9.4
-1.5	kg			*23,490	20,923	*18,628	13,787	*14,898	10,286			*11,818	8,225		9
-3.0	kg	*24,072	*24,072	*20,710	*20,710	*16,762	13,939	*13,296	10,406			*11,582	9,357		8.2
-4.5	kg	*18,555	*18,555	*16,337	*16,337	*13,238	*13,238					*10,685	*10,685		7

LIFTING CAPACITY

952F with 24" Shoes, 23'2" Boom, 9'6" Arm

A: Load radius
 B: Load point height
 C: Lifting capacity rating
 Cf: Rating loads over front
 Cs: Rating loads over side or 360°

Conditions:
 Boom length: 23'2"
 Arm length: 9'6"
 Bucket: None
 counterweight: 23,810 lbs
 Shoes: 24" triple grouser
 Unit: lbs



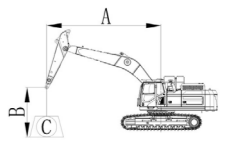
B (ft)	A (Unit: ft)												MAX REACH	A (ft)	
	10.0		15		20		25		30						
	Cf	Cs	Cf	Cs	Cf	Cs	Cf	Cs	Cf	Cs	Cf	Cs			
30	lbs												*28,284	*28,284	23
25	lbs							*27,144	26,068				*26,770	22,961	27
20	lbs							*28,112	25,574				*26,167	19,578	29
15	lbs			*47,970	*47,970	*35,924	33,913	*29,998	24,697	*26,601	18,926	*25,989	17,699		31
10	lbs					*39,914	32,015	*32,061	23,724	*27,480	18,459	*25,927	16,580		32
5	lbs					*42,450	30,631	*33,588	22,904	*28,108	18,026	25,837	16,311		32
GROUND LEVEL	lbs					*42,830	29,945	*34,003	22,394	*27,935	17,759	*26,460	16,822		31
-5	lbs			*51,787	45,270	*41,067	29,823	*32,843	22,246			*26,053	17,788		30
-10	lbs	*53,069	*53,069	*45,658	*45,658	*36,955	30,156	*29,312	22,511			*25,535	20,242		27
-15	lbs	*40,906	*40,906	*36,017	*36,017	*29,186	*29,186					*23,555	*23,555		23

LIFTING CAPACITY

952F with 28" Shoes, 23'2" Boom, 9'6" Arm

A: Load radius
 B: Load point height
 C: Lifting capacity rating
 Cf: Rating loads over front
 Cs: Rating loads over side or 360°

Conditions:
 Boom length: 23'2"
 Arm length: 9'6"
 Bucket: None
 counterweight: 23,810 kg
 Shoes: 28" triple grouser
 Unit: lbs



B (ft)	A (Unit: ft)												MAX REACH	A (ft)	
	10.0		15		20		25		30						
	Cf	Cs	Cf	Cs	Cf	Cs	Cf	Cs	Cf	Cs	Cf	Cs			
30	lbs												*28,284	*28,284	23
25	lbs							*27,144	26,499				*26,770	23,352	27
20	lbs							*28,112	26,005				*26,167	19,928	29
15	lbs			*47,970	*47,970	*35,924	34,487	*29,998	25,128	*26,601	19,271	*25,989	18,027		31
10	lbs					*39,914	32,589	*32,061	24,155	*27,480	18,804	*25,927	16,895		32
5	lbs					*42,450	31,205	*33,588	23,335	*28,108	18,371	*26,066	16,627		32
GROUND LEVEL	lbs					*42,830	30,519	*34,003	22,825	*27,935	18,104	*26,460	17,149		31
-5	lbs			*51,787	46,127	*41,067	30,396	*32,843	22,677			*26,053	18,133		30
-10	lbs	*53,069	*53,069	*45,658	*45,658	*36,955	30,730	*29,312	22,942			*25,535	20,628		27
-15	lbs	*40,906	*40,906	*36,017	*36,017	*29,186	*29,186					*23,555	*23,555		23

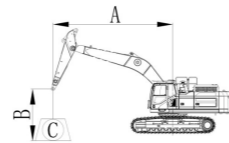


LIFTING CAPACITY

952F with 800 mm Shoes, 7,060 mm Boom, 2,900 mm Arm

A: Load radius
B: Load point height
C: Lifting capacity rating
Cf: Rating loads over front
Cs: Rating loads over side or 360°

Conditions:
Boom length: 7,060 mm
Arm length: 2,900 mm
Bucket: None
counterweight: 10,800 kg
Shoes: 800 mm triple grouser
Unit: kg



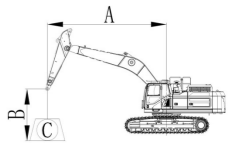
B (m)	A (Unit: m)												MAX REACH	A (m)									
	3		4.5		6		7.5		9														
	Cf	Cs	Cf	Cs	Cf	Cs	Cf	Cs	Cf	Cs	Cf	Cs											
9.0	kg												*12,829	*12,829	6.9								
7.5	kg												*12,312	12,215	*12,143	10,770	8.1						
6.0	kg												*12,751	11,991	*11,869	9,198	8.9						
4.5	kg												*21,759	*21,759	*16,295	15,903	*13,607	11,593	*12,066	8,898	*11,789	8,326	9.4
3.0	kg												*18,105	15,042	*14,543	11,152	*12,465	8,686	*11,760	7,807	9.7		
1.5	kg												*19,255	14,415	*15,235	10,780	*12,750	8,489	*11,823	7,685	9.7		
GROUND LEVEL	kg												*19,428	14,103	*15,424	10,549	*12,671	8,368	*12,002	7,927	9.4		
-1.5	kg												*23,490	21,312	*18,628	14,048	*14,898	10,482	*11,818	8,381	9		
-3.0	kg												*24,072	*24,072	*20,710	*20,710	*16,762	14,199	*13,296	10,602	*11,582	9,532	8.2
-4.5	kg												*18,555	*18,555	*16,337	*16,337	*13,238	*13,238	*10,685	*10,685	7		

LIFTING CAPACITY

952F with 900 mm Shoes, 7,060mm Boom, 2,900 mm Arm

A: Load radius
B: Load point height
C: Lifting capacity rating
Cf: Rated loads over front
Cs: Rated loads over side

Conditions
Boom length: 7,060 mm
Arm length: 2,900 mm
Bucket: None
counterweight: 10,800 kg
Shoes: 900 mm triple grouser
Unit: kg



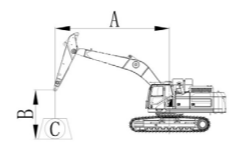
B (m)	A (Unit: m)												MAX REACH	A (m)									
	3		4.5		6		7.5		9														
	Cf	Cs	Cf	Cs	Cf	Cs	Cf	Cs	Cf	Cs	Cf	Cs											
9.0	kg												*12,829	*12,829	6.9								
7.5	kg												*12,312	*12,312	*12,143	10,948	8.1						
6.0	kg												*12,751	12,187	*11,869	9,357	8.9						
4.5	kg												*21,759	*21,759	*16,295	16,163	*13,607	11,789	*12,066	9,054	*11,789	8,474	9.4
3.0	kg												*18,105	15,302	*14,543	11,347	*12,465	8,843	*11,760	7,950	9.7		
1.5	kg												*19,255	14,675	*15,235	10,976	*12,750	8,646	*11,823	7,828	9.7		
GROUND LEVEL	kg												*19,428	14,363	*15,424	10,744	*12,671	8,525	*12,002	8,076	9.4		
-1.5	kg												*23,490	21,701	*18,628	14,308	*14,898	10,677	*11,818	8,538	9		
-3.0	kg												*24,072	*24,072	*20,710	*20,710	*16,762	14,459	*13,296	10,797	*11,582	9,707	8.2
-4.5	kg												*18,555	*18,555	*16,337	*16,337	*13,238	*13,238	*10,685	*10,685	7		

LIFTING CAPACITY

952F with 32" Shoes, 23'2" Boom, 9'6" Arm

A: Load radius
B: Load point height
C: Lifting capacity rating
Cf: Rating loads over front
Cs: Rating loads over side or 360°

Conditions
Boom length: 23'2"
Arm length: 9'6"
Bucket: None
counterweight: 23,810 lbs
Shoes: 32" triple grouser
Unit: lbs



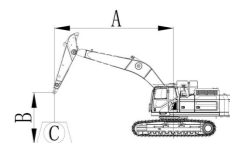
B (ft)	A (Unit: ft)												MAX REACH	A (ft)									
	10.0		15		20		25		30														
	Cf	Cs	Cf	Cs	Cf	Cs	Cf	Cs	Cf	Cs	Cf	Cs											
30	lbs												*28,284	*28,284	23								
25	lbs												*27,144	26,499	*26,770	23,352	27						
20	lbs												*28,112	26,005	*26,167	19,928	29						
15	lbs												*47,970	*47,970	*35,924	34,487	*29,998	25,128	*26,601	19,271	*25,989	18,027	31
10	lbs												*39,914	32,589	*32,061	24,155	*27,480	18,804	*25,927	16,895	32		
5	lbs												*42,450	31,205	*33,588	23,335	*28,108	18,371	*26,066	16,627	32		
GROUND LEVEL	lbs												*42,830	30,519	*34,003	22,825	*27,935	18,104	*26,460	17,149	31		
-5	lbs												*51,787	46,127	*41,067	30,396	*32,843	22,677	*26,053	18,133	30		
-10	lbs												*53,069	*53,069	*45,658	*45,658	*36,955	30,730	*29,312	22,942	*25,535	20,628	27
-15	lbs												*40,906	*40,906	*36,017	*36,017	*29,186	*29,186	*23,555	*23,555	23		

LIFTING CAPACITY

952F with 35" Shoes, 23'2" Boom, 9'6" Arm

A: Load radius
B: Load point height
C: Lifting capacity rating
Cf: Rating loads over front
Cs: Rating loads over side or 360°

Conditions
Boom length: 23'2"
Arm length: 9'6"
Bucket: None
counterweight: 23,814 lbs
Shoes: 35" triple grouser
Unit: lbs



B (ft)	A (Unit: ft)												MAX REACH	A (ft)									
	10.0		15		20		25		30														
	Cf	Cs	Cf	Cs	Cf	Cs	Cf	Cs	Cf	Cs	Cf	Cs											
30	lbs												*28,284	*28,284	23								
25	lbs												*27,144	*27,144	*26,770	24,136	27						
20	lbs												*28,112	26,867	*26,167	20,628	29						
15	lbs												*47,970	*47,970	*35,924	35,634	*29,998	25,990	*26,601	19,961	*25,989	18,682	31
10	lbs												*39,914	33,736	*32,061	25,016	*27,480	19,495	*25,927	17,527	32		
5	lbs												*42,450	32,352	*33,588	24,197	*28,108	19,061	*26,066	17,258	32		
GROUND LEVEL	lbs												*42,830	31,666	*34,003	23,687	*27,935	18,794	*26,460	17,805	31		
-5	lbs												*51,787	47,842	*41,067	31,543	*32,843	23,539	*26,053	18,823	30		
-10	lbs												*53,069	*53,069	*45,658	*45,658	*36,955	31,877	*29,312	23,803	*25,535	21,400	27
-15	lbs												*40,906	*40,906	*36,017	*36,017	*29,186	*29,186	*23,555	*23,555	23		

STANDARD EQUIPMENT

ENGINE SYSTEM

- Cummins X12 engine
- Engine overheat prevention system
- Auto-idle speed control
- Auto engine shutdown
- Double element air filter
- Fuel pre-filter with water separator and water detection
- Variable speed fan
- Cold weather starting kit (-20° C)
- Engine oil low pressure protection
- Automatic preheating
- Electric refueling pump with auto shutoff

HYDRAULIC SYSTEM

- Full electronic controlled hydraulic system
- Boom and arm holding valves
- Monitor controlled eletro-proportional single/dual way circuits with adjustable flow & pressure
- Auxiliary rotation line with on-screen flow adjustment
- Pressure adjustable quick coupler line
- Attachment oil Return circuit
- Boom float function

ELECTRICAL STATION

- 3-power modes (Power / Standard / Economy)
- Paraller wiper
- DAB radio
- Battery disconnect switch
- Emergency engine shutdown
- Attachment flow password protection function
- Attachment flow and pressure history record

- Maintenance-free batteries
- Multi-language selection
- Plateau mode function
- Travel alarm, swing alarm, overload warning and quick coupler warning
- Keyless start
- Rotating beacon
- Machine startup password
- 2-speed travel with auto-shift
- 12V power source
- 360-degree cameras
- 360-degree lighting
- Work lights with turn-off delay (4 boom lights, 2 counterweight lights, LED front and rear work lights – 4 front, 2 rearand right-side platform worklight)
- Automatic A/C with defoging function

OPERATOR SYSTEM

- ROPS cab
- Front lower windshield
- Roof window with sun visor
- Luxury heated air suspension seat with 3-inch retractable seat belt
- 10-inch LCD screen
- Fire extinguisher
- Safety hammer
- Green safety glass
- Sliding window positioning
- Interior lighting
- Tilttable armrest, left-hand side
- Sun visor
- OPG

UNDERCARRIAGE

- 600 mm track-shoes with triple grousers
- Track rollers-9 each side
- Carrier roller- 2 each side
- 8 mm under covers
- Fixed undercarriage

UPPER STRUCTURE

- Standard counterweight, 10,800kg

BOOM & ARM

- 6,500 mm boom, 2,550 mm arm

GUARDS

- Full length track guard
- Bucket cylinder guard
- Platform side guard-bolt on
- Boom cylinder guard
- Platform fall prevention system-steel

SERVICE & MAINTENANCE

- Tool kit
- Spare parts packages
- Diagnostic port
- Self diagnostic system

OPTIONAL EQUIPMENT

ENGINE SYSTEM

- Cold starting kit (-35° C)
- Oil bath air pre-filter

HYDRAULIC SYSTEM

- Hydraulic hammer return oil filtration

ELECTRICAL SYSTEM

- Seatbelt warning
- LED strips front/rear working lights

OPERATOR STATION

- Front window rain visor
- Heated and ventilated air suspension seat with 3 inch red retractable seatbelt

UPPER STRUCTURE

- Removable counterweight, 9,500 kg

UNDERCARRIAGE

- 700 mm track with triple grouser track shoes (only available for machines with fixed undercarriage)
- 800 mm track with triple grouser track shoes (only available for machines with fixed undercarriage)
- 900 mm track with triple grouser track shoes (only available for machines with fixed undercarriage)
- Full Track guard
- Adjustable undercarriage

BOOM & ARM

- 7,060 mm boom, 2,900 mm arm
- 7,060 mm boom, 3,380 mm arm

ATTACHMENT

- Hydraulic quick coupler
- Breaking hammer LGB195
- 2.6 m³ HD digging bucket

- 2.8 m³ HD loading bucket
- 3.2 m³ HD loading bucket

USERVICE & MAINTENANCE

- Long life hydraulic oil
- Automatic centralized lubrication system



LG-PB-952F-Stage V-WW-A4-032025-ENG



Guangxi LiuGong Machinery Co., Ltd.
No. 1 Liutai Road, Liuzhou, Guangxi 545007, PR China
T: +86 772 388 6124 E: overseas@liugong.com
www.liugong.com

Like and follow us:



The LiuGong series of logos herein, including but not limited to word marks, device marks, letter of alphabet marks and combination marks, as the registered trademarks of Guangxi LiuGong Group Co., Ltd. are used by Guangxi LiuGong Machinery Co., Ltd. with legal permission, and shall not be used without permission. Specifications and designs are subject to change without notice. Illustrations and pictures may include optional equipment and may not include all standard equipment. Equipment and options varies by regional availability.