



<b>Engine</b>	Cummins B4.5
<b>Rated Power</b>	115 kW (154 hp / 156 ps) @ 2,200 rpm
<b>Operating Weight</b>	13,500 kg (29,762 lbs)
<b>Standard Bucket Size</b>	1.9 m <sup>3</sup> (2.5 yd <sup>3</sup> )
<b>Standard Breakout Force</b>	118 kN (26,527 lbf)
<b>Standard Dump Clearance</b>	2,804 mm (9'2")

# 838T WHEEL LOADER

# 838T SPECIFICATIONS >>>

ENGINE	
Emission Regulation	Stage V
Manufacturer	Cummins
Model	B4.5
Rated Power	115 kW (154 hp / 156 ps) @ 2,200 rpm
Peak Torque	712 N·m (525 lbf·ft) @ 1,200 rpm
Displacement	4.5 L
Number of Cylinders	4
Aspiration	Turbocharged & Air-to-air intercooled

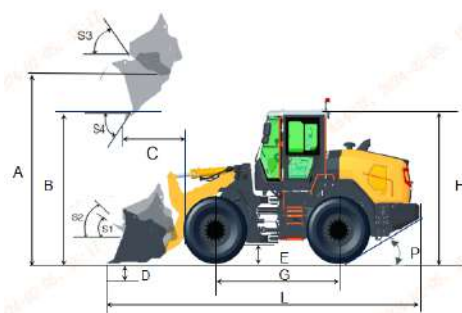
TRANSMISSION	
Transmission Type	Countershaft, power shift
Torque Converter	Single stage, three elements
Maximum Travel Speed, fwd	39.8 km/h (24.7 mph)
Maximum Travel Speed, rev	27.8 km/h (17.3 mph)
Number of Speed, fwd	4
Number of Speed, Rev	3

AXLES	
Differential Front Type	Differential lock
Differential Rear Type	Conventional
Axle Oscillation	±9°

STEERING	
Steering Hydraulic System	Coaxial flow amplifying
Steering Relief Pressure	18 MPa (2,611 psi)

BRAKES	
Service Brake Type	Wet discs brake
Service Brake Actuation	Full hydraulic
Parking Brake Type	Drum
Parking Brake Actuation	Electro-hydraulic release

HYDRAULIC SYSTEM	
Main Pump Type	Piston
Main Relief Pressure	26 MPa (3,771 psi)
Raise	4.8 s
Dump Time	1.9 s
Float Down Time	3.1 s
Hydraulic Cycle Time	9.8 s



LOADER ARM PERFORMANCE WITH STANDARD BUCKET 1.9 m <sup>3</sup> (2.5 yd <sup>3</sup> )	
Tipping Load - Straight (ISO 14397-1:2007)	8,600 kg (18,960 lbs)
Tipping Load - Full Turn (ISO 14397-1:2007)	7,400 kg (16,314 lbs)
Bucket Breakout Force	118 kN (26,527 lbf)
A Maximum Hinge Pin Height	3,870 mm (12'8")
B Dump Clearance at Full Height Discharge	2,840 mm (9'4")
C Dump Reach at Full Height Discharge	1,117 mm (3'8")
D Maximum Digging Depth, Bucket Level	90 mm (4")
S <sub>1</sub> Rollback at Ground Level	42 °
S <sub>2</sub> Bucket Rollback at Carry	48 °
S <sub>3</sub> Bucket Rollback at Maximum Height	54.5 °
S <sub>4</sub> Maximum Dump Angle at Full Height	45 °

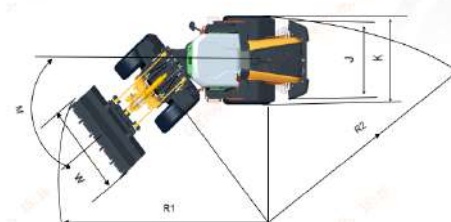
BUCKET PERFORMANCE	
Reference Bucket	1.8-4.0 m <sup>3</sup> (2.4-5.2 yd <sup>3</sup> )

DIMENSIONS	
E Ground Clearance	400 mm (1'4")
G Wheelbase	2,870 mm (9'5")
H Cab Height	3,352 mm (11')
J Wheel Tread	1,950 mm (6'5")
K Width over Tires	2,420 mm (7'11")
L Length with Bucket Down	7,350 mm (24'1")
M Turn Angle, Either Side	40 °
P Rear Angle of Departure	28 °
R <sub>1</sub> Turning Radius, Bucket Carry	5,959 mm (19'7")
R <sub>2</sub> Turning Radius, Outside of Tire	5,213 mm (17'1")
W Width over Bucket	2,700 mm (8'10")

TIRES	
Tire Size	20.5R25

OPERATING WEIGHTS	
Operating Weight	13,500 kg (29,762 lbs)

SERVICE CAPACITY	
Fuel Tank	190 L (50.2 gal)
Engine Oil	12 L (3.2 gal)
Cooling System	34 L (9.0 gal)
Aftertreatment DEF	25 L (6.6 gal)
Hydraulic System	160 L (42.3 gal)
Transmission and Torque Converter	40 L (10.6 gal)
Axles, each	33 L (8.7 gal)



## Guangxi Liugong Machinery Co., Ltd.

No. 1 Liutai Road, Liuzhou, Guangxi 545007, PR China  
 T: +86 772 3886124 E: overseas@liugong.com  
 www.liugong.com

Specifications and designs are subject to change without notice. Machines shown may include optional equipment. Liugong standard and optional equipment may vary from region to region. Please consult your Liugong dealer for information specific to your area. Engine power kW is converted to horsepower (1 kW=1.3596 ps and 1 kW=1.3410 hp) in this file.

03/2025 Designed by LiuGong  
 Replace the previous versions of 09/2024