



Engine	Cummins B6.7
Rated Power	129 kW (173 hp / 175 ps) @ 2,200 rpm
Operating Weight	16,500 kg (36,376 lbs)
Standard Bucket Size	2.7 m ³ (3.5 yd ³)
Standard Breakout Force	142 kN (32,923 lbf)
Standard Dump Clearance	2,848 mm (9'4")

848T WHEEL LOADER

TOUGH WORLD. TOUGH EQUIPMENT.

848T SPECIFICATIONS >>>

ENGINE

Emission Regulation	EU Stage V
Manufacturer	Cummins
Model	B6.7
Rated Power	129 kW (173 hp / 175 ps) @ 2,200 rpm
Peak Torque	881 N·m (650 lbf·ft) @ 1,300 rpm
Displacement	6.7 L (1.8 gal)
Number of Cylinders	6
Aspiration	Turbocharged & Air-to-air intercooled

TRANSMISSION

Transmission Type	Countershaft, power shift
Torque Converter	Single stage, three elements
Maximum Travel Speed, fwd	39 km/h (24.2 mph)
Maximum Travel Speed, rev	26.1 km/h (16.2 mph)
Number of Speed, fwd	4
Number of Speed, rev	3

AXLES

Differential Front Type	Limited slip differential
Differential Rear Type	Limited slip differential
Axle Oscillation	±12°

STEERING

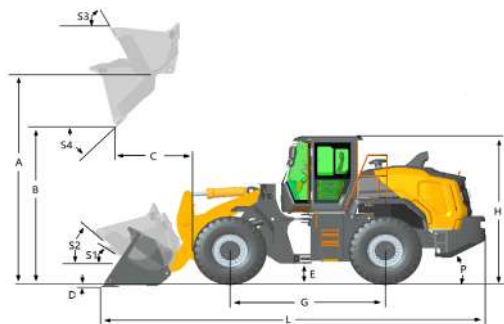
Steering Hydraulic System	Large displacement steering
Steering Relief Pressure	22 MPa (3,191 psi)

BRAKES

Service Brake Type	Wet discs brake
Service Brake Actuation	Full hydraulic
Parking Brake Type	Drum
Parking Brake Actuation	Electro-hydraulic release

HYDRAULIC SYSTEM

Main Pump Type	Piston
Main Relief Pressure	28 MPa (4,061 psi)
Raise	5.6 s
Dump Time	1.6 s
Float Down Time	3.3 s
Hydraulic Cycle Time	10.6 s



LOADER ARM PERFORMANCE WITH STANDARD BUCKET 2.7 m³ (3.5 yd³)

Tipping Load - Straight (ISO 14397-1:2007)	11,530 kg (25,419 lbs)
Tipping Load - Full Turn (ISO 14397-1:2007)	9,600 kg (21,164 lbs)
Bucket Breakout Force	142 kN (31,923 lbf)
A Maximum Hinge Pin Height	3,998 mm (13'1")
B Dump Clearance at Full Height Discharge	2,848 mm (9'4")
C Dump Reach at Full Height Discharge	1,207 mm (3'12")
D Maximum Digging Depth, Bucket Level	109 mm (4")
S ₁ Rollback at Ground Level	45°
S ₂ Bucket Rollback at Carry	49°
S ₃ Bucket Rollback at Maximum Height	62°
S ₄ Maximum Dump Angle at Full Height	45°

BUCKET PERFORMANCE

Reference Bucket	2.5-5.0 m³ (3.3 -6.5 yd³)
------------------	---------------------------

DIMENSIONS

E Ground Clearance	414 mm (1'4")
G Wheelbase	3,100 mm (10'2")
H Cab Height	3,382 mm (11'1")
J Wheel Tread	2,150 mm (7'1")
K Width over Tires	2,670 mm (8'9")
L Length with Bucket Down	7,924 mm (25'12")
M Turn Angle, Either Side	40°
P Rear Angle of Departure	28°
R ₁ Turning Radius, Bucket Carry	6,360 mm (20'10")
R ₂ Turning Radius, Outside of Tire	5,647 mm (18'6")
W Width over Bucket	2,920 mm (9'7")

TIRES

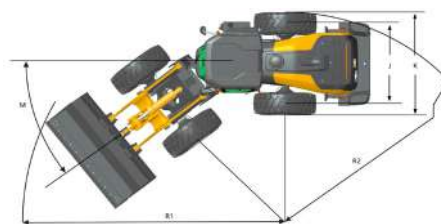
Tire Size	20.5R25
-----------	---------

OPERATING WEIGHTS

Operating Weight	16,500 kg (36,376 lbs)
------------------	------------------------

SERVICE CAPACITY

Fuel Tank	240 L (63.4 gal)
Engine Oil	20 L (5.3 gal)
Aftertreatment DEF	25 L (5.0 gal)
Cooling System	44 L (11.6 gal)
Hydraulic System	154 L (41 gal)
Transmission	40 L (10.6 gal)
Axles, Front/Rear	43/48 L (11.4/12.7 gal)



Guangxi Liugong Machinery Co., Ltd.

No. 1 Liutai Road, Liuzhou, Guangxi 545007, PR China
 T: +86 772 3886124 E: overseas@liugong.com
 www.liugong.com

Specifications and designs are subject to change without notice. Machines shown may include optional equipment. Liugong standard and optional equipment may vary from region to region. Please consult your Liugong dealer for information specific to your area. Engine power kW is converted to horsepower (1 kW=1.3596 ps and 1 kW=1.3410 hp) in this file.

03/2025 Designed by LiuGong
 Replace the previous versions of 02/2025