

LIUGONG

9018F EXCAVATOR

F SERIES

Engine	Yanmar 3TNV80F-SSLY
Net Power	13.4 kW
Operating Weight	1,800 kg - Canopy 1,900 kg - Cab
Bucket Capacity	0.045 m ³



TOUGH WORLD. TOUGH EQUIPMENT.

BUILT FOR THE TOUGHEST APPLICATIONS

For over 65 years, LiuGong has built machines that thrive in the toughest environments. The 9018F, part of our advanced F-Series, is engineered for maximum power, precision, and durability.

Designed to excel in delicate tasks in precision worksites, this machine combines cutting-edge technology with proven reliability to keep you working efficiently in even the confined space operation.

Since launching our first hydraulic excavator in 1992, we've remained committed to innovation, ensuring every LiuGong machine is built to perform, wherever the job takes you.



YOUR PERFORMANCE DASHBOARD

Research tells us that 6 key performance areas really matter to you. We'd like to use this performance dashboard to present the real, tough facts about our 9018F.



POWER & EFFICIENCY



COMPACT YET CAPABLE



SMART VERSATILITY



UPTIME & MAINTENANCE



INTELLIGENCE & CONTROL



COMFORT & ERGONOMICS

THIS IS LIUGONG



65+ YEARS
EST 1958



30+ PRODUCT LINES



12 GLOBAL R&D CENTERS



30+ GLOBAL OFFICES



16,000+ EMPLOYEES



20+ GLOBAL MANUFACTURING FACILITIES

THE 9018F IN ACTION...

The 9018F's compact size, combined with a retractable undercarriage and foldable dozer blade, allows operators to pass through narrow space easily.



LET'S TAKE A CLOSER LOOK...



EFFICIENT POWER, LOWER FUEL USE

Designed to save fuel without sacrificing performance.

- ▶ The 9018F is powered by a EU Stage V Yanmar engine that delivers strong performance with low noise reduced emissions.
- ▶ Auto-idle and intelligent engine management adjust speed based on real-time load, cutting fuel use without compromising productivity.
- ▶ Compared with industry averages, operators can save up to 10% on fuel.



COMPACT SIZE, BIG CAPACITY

Designed to work where space is tight.

- ▶ Agile and ergonomic boom swing control allows the new 9018F working access to the smallest spaces with a 72-degree swing to the left and 52-degrees to the right.
- ▶ A retractable undercarriage (980-1,290 mm) and lightweight frame make it easy to transport and maneuver in narrow access areas.



VERSATILITY BUILT IN

Designed for multiple tools and job types.

- ▶ Standard high-flow auxiliary lines support a variety of attachments, and an optional rotation circuit adds even more flexibility.
- ▶ With the optional counterweight, the 9018F can handle heavier tools, making it ready for trenching, demolition, and site prep tasks.
- ▶ A full bucket range is available to match every job.



QUICK SERVICE, MORE UPTIME

Designed for easy access and fast maintenance.

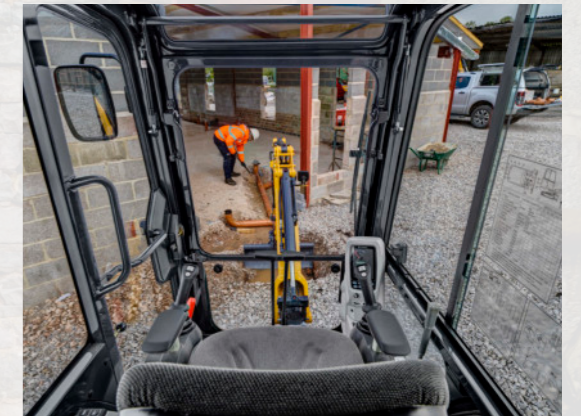
- ▶ Daily checks and routine maintenance are made simple with wide-opening covers and easy-to-reach service points.
- ▶ Filters, dipsticks, and access to the main pump and radiator are all within reach, reducing downtime and keeping the machine on the job longer.



SMOOTH, PRECISE CONTROL

Designed for confident operation.

- ▶ The machine features load-sensing hydraulics for consistent, responsive performance.
- ▶ Electro-proportional control of attachments makes operation intuitive, while the redesigned dozer blade geometry enables smooth coordination between blade and bucket for quick clean-up.
- ▶ The two-speed travel with auto-shift adjusts travel speed automatically on various ground conditions, ensuring smooth operation and maximum productivity.



ENHANCED OPERATOR EXPERIENCE

Designed for all-day operator comfort.

- ▶ The new heating and cooling air conditioning has been designed to keep the operators comfortable in various environment.
- ▶ Our LCD panel delivers easy-to-read machine information for operator eye comfort.
- ▶ Ergonomic layout and low-vibration operation reduce fatigue across long shifts.



9018F SPECIFICATIONS

Operating weight	Canopy 1,800 kg
	Cab 1,900 kg
Operating weight includes coolant, lubricants, full fuel tank, cab, standard Shoes, boom, arm, bucket and operator 75 kg.	
Bucket capacity	0.045 m ³

ENGINE

Description

Yanmar EU Stage V, 3-cylinder straight four strokes, indirect injection.

Emission rating	EPA Tier 4F / EU Stage V
Engine manufacturer	Yanmar
Engine model	3TNV80F-SSLY
Aspiration	Natural
Charged air cooling	Aftercooler
Cooling fan drive	Direct
Displacement	1.267 L
Engine output - gross	13.4 kW (17.1 hp) @ 2,200 rpm
Maximum torque	63.1-64.7 N·m @1,600 rpm
Bore × Stroke	80 × 84 mm

UNDERCARRIAGE

Track shoe each side	37 / 70
Link pitch	90 mm / 48 mm
Shoe width, triple grouser	230 mm
Bottom rollers each side	3
Top rollers each side	-

SWING SYSTEM

Description

Planetary gear reduction driven by high torque axial piston motor, with oil disk brake. Swing parking brake resets within five seconds after swing pilot controls return to neutral.

Swing speed	9.5 rpm
Swing torque	2,119 N·m

HYDRAULIC SYSTEM

Main pump

Type	Load-sensing variable pump
------	----------------------------

Maximum flow	55 L/min
--------------	----------

Relief valve setting

Implement	21 MPa
Travel circuit	21 MPa
Slew circuit	13.2 MPa

Pilot circuit	3.5-3.9 MPa
---------------	-------------

Hydraulic cylinders

Boom Cylinder – Bore × Stroke	Ø60 × 462 mm
Arm Cylinder – Bore × Stroke	Ø60 × 365 mm
Bucket Cylinder – Bore × Stroke	Ø60 × 295 mm

ELECTRIC SYSTEM

System Voltage	12 V
Batteries	12 V
Alternator	12 V - 40 A
Start motor	12 V - 1.4 kW

SERVICE CAPACITIES

Fuel tank	28 L
Engine oil	4.4 L
Cooling system	3.3 L
Hydraulic reservoir	24 L
Hydraulic system total	-

SOUND PERFORMANCE

Interior Sound Power Level (ISO 6396)	78 dB(A)
Exterior Sound Power Level (ISO 6395)	90 dB(A)

DRIVE AND BRAKES

Description

Steering controlled by two hand levers with pedals.	
Max. travel speed	High: 4.2 km/h Low: 2.6 km/h
Gradeability	30°/58%
Max. drawbar pull	16 kN

MACHINE WEIGHTS & GROUND PRESSURE

Shoe width	Cab/Canopy	Shoe type	Operating weight	Ground pressure	Overall width
			1,685 mm, 1,070 mm arm, 0.045 m ³ bucket, 70 kg counterweight		
230 mm	Cab	Rubber	1,900 kg	30.5 kPa	1,290 mm
		Metal	1,900 kg	30.5 kPa	1,290 mm
	Canopy	Rubber	1,800 kg	28.9 kPa	1,290 mm

ARM DIMENSIONS

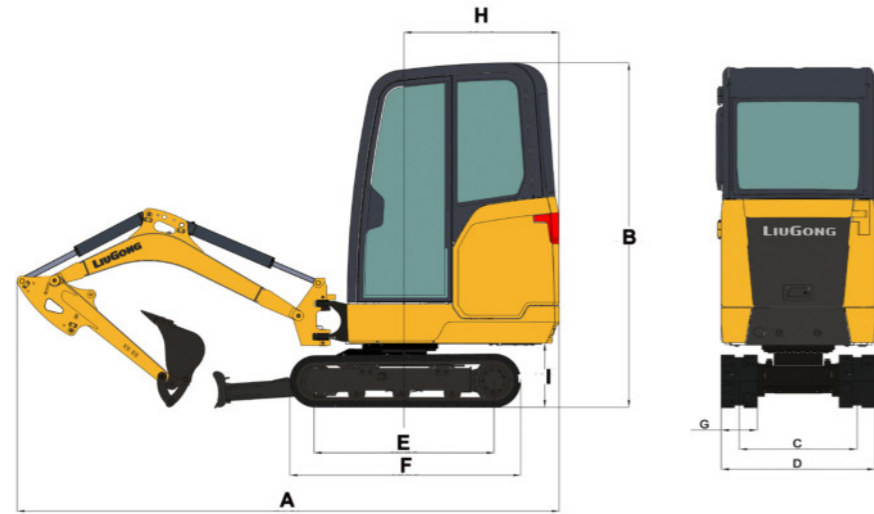
Description		
Arm	1,070 mm	1,210 mm
Length	1,305 mm	1,450 mm
Height	282 mm	248 mm
Width	113 mm	113 mm
Weight	50 kg	52 kg

Cylinder, linkage and pin included.

BOOM DIMENSIONS

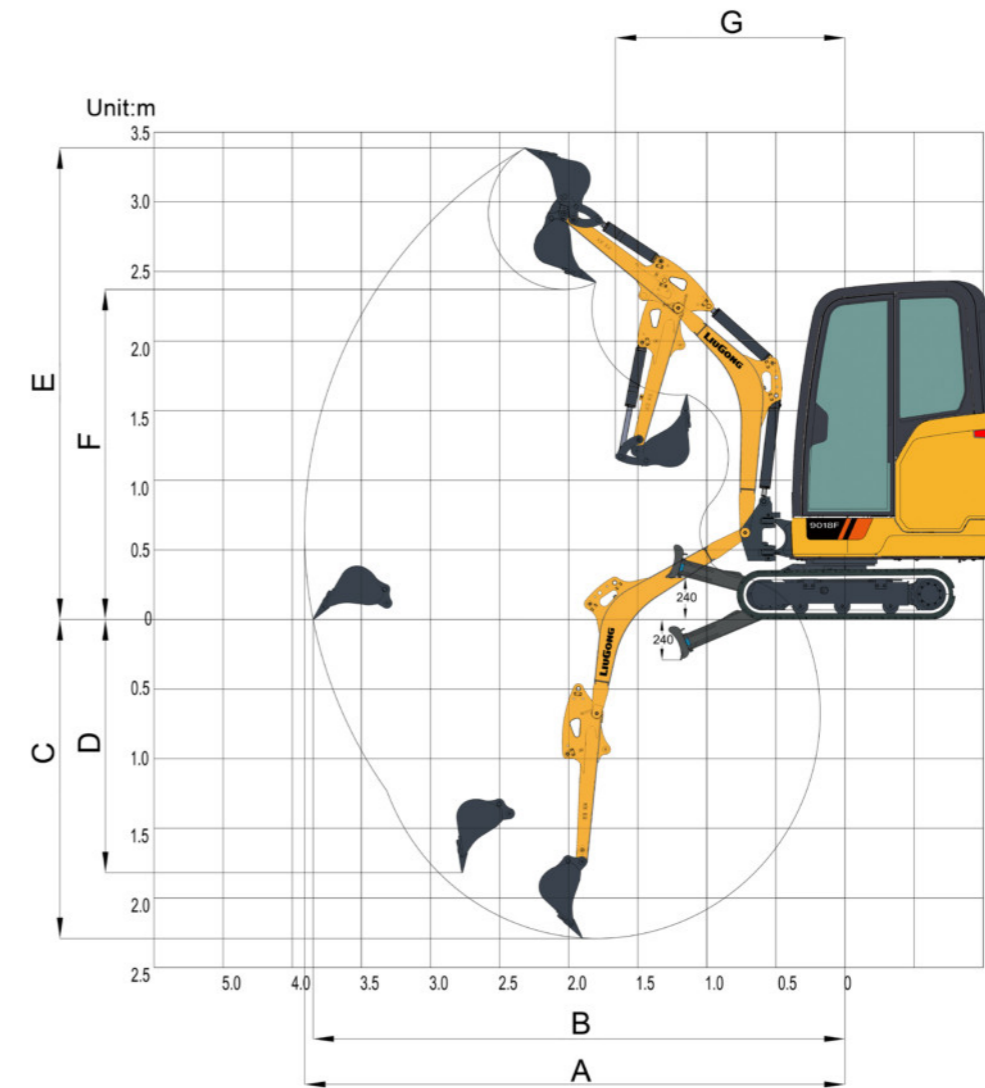
Description		
Boom		1,685 mm
Length		1,767 mm
Height		615 mm
Width		246 mm
Weight		87.5 kg

Cylinder, piping and pin included. Boom cylinder pin excluded.



DIMENSIONS

Boom	1,685 mm	
Arm Options	1,070 mm	1,210 mm
A Shipping Length	3,707 mm	3,668 mm
B Shipping Height	2,350 mm	
C Track Gauge	750 / 1,060 mm	
D Undercarriage Width	980 / 1,290 mm	
E Length to Center of Rollers	1,230 mm	
F Track Length	1,580 mm	
G Track Shoe Width	230 mm	
H Tail Swing Radius	1,070 mm	
I Counterweight Ground Clearance	435 mm	
Overall Height of Cab	1,635 / 1,670 mm (cab / canopy)	
Min. Ground Clearance	100 mm	
Overall Width of Upper Structure	980 mm	
Distance Between The Working Device And Swing Center--Right	419 mm	
Distance Between The Working Device And Swing Center--Left	558 mm	
Maximum Boom Swing Angle to the Right	58°	
Maximum Boom Swing Angle to the Left	72°	



WORKING RANGE

Boom Length	1,685 mm	
Arm Options	1,070 mm	1,210 mm
A. Max. Digging Reach	3,910 mm	4,040 mm
B. Max. Digging Reach on Ground	3,850 mm	3,980 mm
C. Max. Digging Depth	2,290 mm	2,430 mm
D. Max. Vertical Wall Digging Depth	1,820 mm	1,950 mm
E. Max. Cutting Height	3,385 mm	3,475 mm
F. Max. Dumping Height	2,370 mm	2,460 mm
G. Min. Front Swing Radius	1,660 mm	1,700 mm
Blade up	240 mm	240 mm
Blade down	240 mm	240 mm
Bucket Digging Force (ISO)	16 kN	16 kN
Arm Digging Force (ISO)	9 kN	8 kN
Bucket Capacity	0.045 m³	0.045 m³
Bucket Tip Radius	548 mm	548 mm

Lifting capacity at the arm end without bucket.
For lifting capacity including bucket, weight of the bucket or the bucket with quick coupler must be deducted from the lifting capacities.
Lifting capacities are based on the machine standing on a firm, uniform supporting surface.



Rating over-front (Cf)



Rating over-side (Cs)

- Do not attempt to lift or hold any load that is greater than these rated values at their specified load radius and height. Weight of all accessories must be deducted from the above lifting capacities.
- The rated loads are in compliance with ISO 10567 Hydraulic Excavator Lift Capacity Rating Standard. They do not exceed 87% of hydraulic lifting capacity or 75% tipping load.
- Ratings at bucket lift hook.
- Lifting capacities are based on machine standing on level, firm and uniform ground.
- *Indicates the load is limited by hydraulic capacity rather than tipping capacity.
- Operator should be fully acquainted with the Operator's and Maintenance Instructions before operating this machine and rules for the safe operation of equipment should be adhered to at all times.

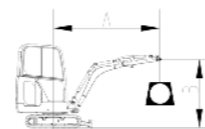
LIFTING CAPACITY (METRIC)

9018F with 230 mm Shoes, 1,685 mm Boom, 1,070 mm Arm

Conditions

A: Load radius
B: Load point height
C: Lifting capacity rating
Cf: Rating loads over front
Cs: Rating loads over side or 360°

Boom length: 1,685 mm
Arm length: 1,070 mm
Shoes: 230 mm
Bucket: None
Unit: kg



A (Blade Up)

B (m)		1.5m		2m		2.5m		3m		MAX REACH		A (m)
		Cf	Cs	Cf	Cs	Cf	Cs	Cf	Cs	Cf	Cs	
4.0	kg	-	-	-	-	-	-	-	-	-	-	-
3.5	kg	-	-	-	-	-	-	-	-	-	-	-
3.0	kg	-	-	-	-	-	-	-	-	-	-	-
2.5	kg	-	-	-	-	352	272	-	-	334	259	2.6
2.0	kg	-	-	-	-	*350	274	-	-	268	207	3.0
1.5	kg	-	-	443	*360	348	269	264	204	238	183	3.2
1.0	kg	-	-	473	359	339	260	260	200	222	171	3.3
0.5	kg	-	-	452	340	329	251	255	195	218	166	3.4
Ground Level	kg	686	496	439	328	321	243	251	191	222	169	3.3
-0.5	kg	686	496	435	324	317	240	249	189	238	181	3.1
-1.0	kg	691	500	436	325	318	240	-	-	273	208	2.8
-1.5	kg	702	510	443	331	-	-	-	-	365	276	2.3

A (Blade Down)

B (m)		1.5m		2m		2.5m		3m		MAX REACH		A
		Cf	Cs	Cf	Cs	Cf	Cs	Cf	Cs	Cf	Cs	
4.0	kg	-	-	-	-	-	-	-	-	-	-	-
3.5	kg	-	-	-	-	-	-	-	-	-	-	-
3.0	kg	-	-	-	-	-	-	-	-	-	-	-
2.5	kg	-	-	-	-	*375	272	-	-	*396	259	2.6
2.0	kg	-	-	-	-	*350	274	-	-	*406	207	3.0
1.5	kg	-	-	*360	*360	*409	269	*410	204	*403	183	3.2
1.0	kg	-	-	*611	359	*500	260	*435	200	*395	171	3.3
0.5	kg	-	-	*787	340	*569	251	*453	195	*386	166	3.4
Ground Level	kg	*731	496	*813	328	*583	243	*446	191	*380	169	3.3
-0.5	kg	*850	496	*752	324	*546	240	*405	189	*374	181	3.1
-1.0	kg	*965	500	*648	325	*467	240	-	-	*374	208	2.8

STANDARD EQUIPMENT

- ENGINE SYSTEM**
 - Engine Yanmar 3TNV80F-SSLY, Tier 4 Final / EU Stage V in line 3 cylinders, 4 stroke, water cooled, natural aspiration
 - Automatic engine idle function
 - Air filter with pre-cleaner
 - Fuel pre-filter with water separator
 - Radiator, oil cooler, aftercooler, cooling fan drive - direct
 - Engine oil filter
- DRIVETRAIN**
 - Travel motors
 - 2-speed travel system with automatic shift up and down
- SWING SYSTEM**
 - Piston swing motor with automatic release brake
- HYDRAULIC SYSTEM**
 - Main pump; axial piston pump
 - Dual way auxiliary line, with proportional joystick control, with flow adjustment function
 - Valve-controlled auxiliary circuit (one or two ways)
 - Rotation lines - rotation flow adjustment
 - Quick Coupler lines, high pressure
 - Quick-coupler on warning
 - Cylinders: boom, stick, bucket
- BOOM AND ARM**
 - Boom swing
 - Boom, 1,685 mm
 - Arm, 1,070 mm
- OPERATOR STATION**
 - Cab, TOPS (ISO 12117) and ROPS (ISO 3471)
 - Mechanical suspension vinyl seat
 - Seat belt, 2" retractable, red
 - Heater and defroster
 - AM/FM radio with MP3 audio jack
 - Floor mat
 - Fire extinguisher, 1 kg
 - One Liugong key for all locks
 - Cup holder
 - Travel levers and pedals
 - Dozer control lever with integrated travel button
 - Rear view mirrors, left-hand and right-hand side
- INSTRUMENTATION**
 - Digital instrument panel
 - Warning indicators of engine oil pressure, low fuel level, overheating, air filter
 - Service hour meter
 - Fuel level gauge
 - Coolant level gauge - ground level

- ELECTRICAL SYSTEM**
 - Alternator 40 A
 - One battery 12 V
 - LED working lights, 1 boom mounted, 2 front canopy mounted
 - Travel alarm
 - Orange LED rotating beacon
 - Green LED seatbelt connected beacon
 - Secondary engine shutoff switch
 - 12 V power outlet
- UNDERCARRIAGE**
 - Hydraulic adjustable undercarriage
 - Long dozer Blade without float function
 - Dozer blade load holding valve
 - Rollers, bottom - 3 each side
 - Track shoes, 230 mm, rubber
 - 2 mm belly cover
- OTHERS**
 - Standard Counterweight, 98 kg
 - Manuals, parts and operator's
 - Liugong iLink telematics, includes 2-year subscription

OPTIONAL EQUIPMENT

- OPERATOR STATION**
 - Canopy, TOPS (Tip-over Protective Structure)
 - Air conditioner, heater and defroster
- UNDERCARRIAGE**
 - Short dozer Blade without float function
 - Track shoes, 230 mm, steel, triple grouser
- BOOM AND ARM**
 - Arm, 1,210 mm
- GUARD**
 - Mesh guard (for cab only)
- ATTACHMENT**
 - 234 mm trenching bucket (0.015 m³)
 - 300 mm general purpose bucket (0.022 m³)
 - 455 mm general purpose bucket (0.038 m³)
 - 600 mm general purpose bucket (0.056 m³)
 - 1,000 mm ditching/grading bucket - BORCE (0.08 m³)
 - Mechanical quick coupler (Miller - Pin Grabber)
 - Hydraulic quick coupler (Miller - Pin Grabber)
 - Liugong LGB45 hydraulic breaker



Guangxi LiuGong Machinery Co., Ltd.
No. 1 Liutai Road, Liuzhou, Guangxi 545007, PR China
T: +86 772 388 6124 E: overseas@liugong.com
www.liugong.com

Like and follow us:



LG-PB-9018F-Stage V-A4-062025-ENG

The LiuGong series of logos herein, including but not limited to word marks, device marks, letter of alphabet marks and combination marks, as the registered trademarks of Guangxi LiuGong Group Co., Ltd. are used by Guangxi LiuGong Machinery Co., Ltd. with legal permission, and shall not be used without permission. Specifications and designs are subject to change without notice. Illustrations and pictures may include optional equipment and may not include all standard equipment. Equipment and options varies by regional availability.