

LIUGONG

9027F_{ZTS} EXCAVATOR

F SERIES

Engine	Yanmar 3TNV80F-SNLY
Net Power	15.2 kW
Operating Weight	Canopy 2,680 kg Cab 2,750 kg
Bucket Capacity	0.08 m ³



TOUGH WORLD. TOUGH EQUIPMENT.

BUILT FOR THE TOUGHEST APPLICATIONS

For over 65 years, LiuGong has built machines that thrive in the toughest environments. The 9027F_{ZTS}, part of our advanced F-Series, is engineered for maximum power, precision, and durability.

Designed to tackle even the most demanding tasks, this machine combines cutting-edge technology with proven reliability to keep you working efficiently in even the harshest conditions.

Since launching our first hydraulic excavator in 1992, we've remained committed to innovation, ensuring every LiuGong machine is built to perform, wherever the job takes you.



YOUR PERFORMANCE DASHBOARD

Research tells us that 6 key performance areas really matter to you. We'd like to use this performance dashboard to present the real, tough facts about our 9027F_{ZTS}.



COMPACT YET POWER



TOUGHNESS & DURABILITY



FLEXIBILITY & MOBILITY



UPTIME & MAINTENANCE



VERSATILITY



COMFORT & EASY CONTROL

THIS IS LIUGONG



65+
YEARS
EST 1958



30+
PRODUCT LINES



12
GLOBAL R&D CENTERS



30+
GLOBAL OFFICES



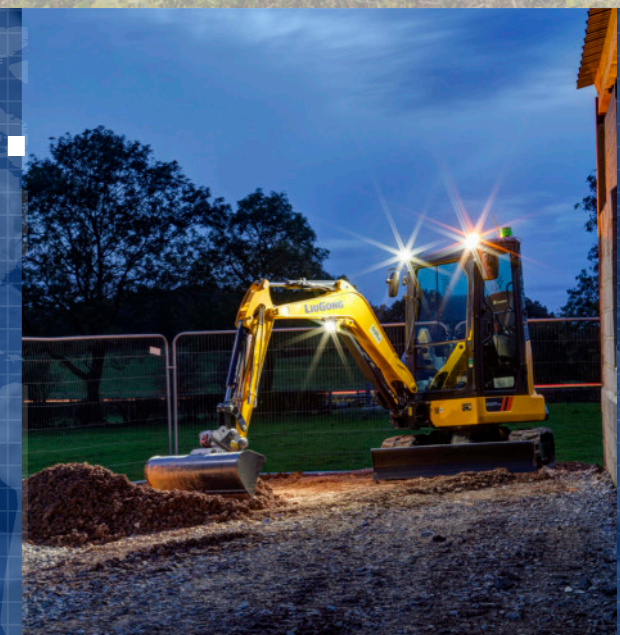
16,000+
EMPLOYEES



20+
GLOBAL MANUFACTURING FACILITIES

THE 9027F_{ZTS} IN ACTION...

The 9027F_{ZTS} zero-tail swing excavator allows operators to maneuver and turn with ease in tight spaces. Equipped with premium hydraulic circuits, it delivers exceptional maneuverability and versatility for multi-purpose applications across urban construction, landscaping, and demolition worksites.



LET'S TAKE A CLOSER LOOK...



GET MORE DONE WITH LESS EFFORT

The 9027F_{ZTS} delivers both power and efficiency to tackle any jobsite challenges.

- ▶ Powered by EU Stage V Yanmar engine, our machine delivers strong digging and lifting force with low noise level and reduced emissions.
- ▶ Load-sensing hydraulic system with pilot control delivers perfect precision and smooth operation across all working conditions.
- ▶ The auto-shift two-speed system automatically adjusts to any terrain—boosting improved traction for power or faster speed for efficiency.



BUILT TO ENDURE DEMANDING JOBS

Durability is engineered into every component to ensure reliable operation.

- ▶ Hydraulic hoses are protected inside the boom to prevent accidental damage.
- ▶ Robust castings on the boom tip are designed to withstand tough working conditions.
- ▶ Multiple track options enable the machine to adapt to various terrains and jobsites.



NAVIGATE CONFINED JOBSITES WITH CONFIDENCE

Engineered for civil and utility work, the 9027F_{ZTS} offers unmatched maneuverability.

- ▶ The compact size and zero-tail swing minimize rear swing risk in tight spaces.
- ▶ Offset boom swing enables precision digging while maintaining safe clearance against obstacles—reducing collision risks.



SIMPLIFY MAINTENANCE AND STAY JOB-READY

Easy maintenance design keeps downtime minimal and work moving smoothly.

- ▶ Fully opening side panels provide quick access to critical components.
- ▶ Centralized service points make daily checks faster and easier.
- ▶ The cold weather start system reduces waiting time in low-temperature conditions.



CONQUER ANY JOBSITE WITH MULTI-PLE OPTIONS

The 9027F_{ZTS} delivers unmatched versatility with multi-circuit hydraulics.

- ▶ Standard spec with dual-way auxiliary lines increased versatility to use various attachment operations like buckets, hammers and grapples.
- ▶ Premium spec with rotation lines and oil drain line allows rotating and tilting of the attachments, like shears and rotators.
- ▶ Factory-fit quick coupler lines and miller quick couplers enable quick attachment change and increase uptime.



STAY FOCUSED WITH ENHANCED EXPERIENCE

The 9027F_{ZTS} prioritizes operator comfort with an ergonomic and comfortable cab.

- ▶ The suspension seat with adjustable armrest and retractable seat belt minimises operator fatigue during long shifts.
- ▶ Heating and cooling air conditioner with one touch operation keeps the operators cool in summer and warm in winter.
- ▶ The LCD panel provides easy-to-read and easy-to-access machine status and conditions.
- ▶ Rubber track shoes absorb vibrations during machine travel, reducing operator strain.



9027F_{ZTS} SPECIFICATIONS

Operating weight	Canopy 2,680 kg
	Cab 2,750 kg

Operating weight includes coolant, lubricants, full fuel tank, cab, standard shoes, boom, arm, bucket and operator 75 kg.

Bucket capacity	0.08 m ³
-----------------	---------------------

ENGINE

Description

Yanmar EU Stage V, 3-cylinder straight four strokes, indirect injection.

Emission rating	EPA Tier 4F / EU Stage V
-----------------	--------------------------

Engine manufacturer	Yanmar
---------------------	--------

Engine model	3TNV80F-SNLY
--------------	--------------

Aspiration	Natural
------------	---------

Charged air cooling	Aftercooler
---------------------	-------------

Cooling fan drive	Direct
-------------------	--------

Displacement	1.267 L
--------------	---------

Engine output - gross	15.2 kW @ 2,500 rpm
-----------------------	---------------------

Maximum torque	67.3 N-m @ 1,800 rpm
----------------	----------------------

Bore × Stroke	80 × 84 mm
---------------	------------

UNDERCARRIAGE

Track shoe each side	41 mm / 80 mm
----------------------	---------------

Link pitch	101.6 mm / 52.5 mm
------------	--------------------

Shoe width, triple grouser	300 mm
----------------------------	--------

Bottom rollers each side	4 (rubber track shoes)
--------------------------	------------------------

Top rollers each side	1
-----------------------	---

SWING SYSTEM

Description

Planetary gear reduction driven by high torque axial piston motor, with oil disk brake. Swing parking brake resets within five seconds after swing pilot controls return to neutral

Swing speed	9.5 rpm
-------------	---------

Swing torque	4,600 N-m
--------------	-----------

HYDRAULIC SYSTEM

Main pump

Type	Load-sensing variable pump
------	----------------------------

Maximum flow	86 L/min
--------------	----------

Relief valve setting

Implement	25.3 MPa
-----------	----------

Travel circuit	21.6 MPa
----------------	----------

Slew circuit	18.6 MPa
--------------	----------

Pilot circuit	3.5-3.9 MPa
---------------	-------------

Hydraulic cylinders

Boom Cylinder – Bore × Stroke	φ 70× 510 mm
-------------------------------	--------------

Arm Cylinder – Bore × Stroke	φ 70 × 482 mm
------------------------------	---------------

Bucket Cylinder – Bore × Stroke	φ 65 × 382 mm
---------------------------------	---------------

ELECTRIC SYSTEM

System voltage	12 V
----------------	------

Batteries	12 V
-----------	------

Alternator	12 V-40 A
------------	-----------

Start motor	12 V-1.4 kW
-------------	-------------

SERVICE CAPACITIES

Fuel tank	27 L
-----------	------

Engine oil	4.4 L
------------	-------

Cooling system	5 L
----------------	-----

Hydraulic reservoir	26 L
---------------------	------

Hydraulic system total	40 L
------------------------	------

SOUND PERFORMANCE

Interior Sound Power Level (ISO 6396)	79 dB(A)
---------------------------------------	----------

Exterior Sound Power Level (ISO 6395)	93 dB(A)
---------------------------------------	----------

DRIVE AND BRAKES

Description

Steering controlled by two hand levers with pedals.

Max. travel speed	High: 4.2 km/h
	Low: 2.6 km/h

Gradeability	25.8 (cab) / 26.4 (canopy)
--------------	----------------------------

Max. drawbar pull	26 kN
-------------------	-------

MACHINE WEIGHTS & GROUND PRESSURE

Shoe width	Cab/Canopy	Shoe type	Operating weight	Ground pressure	Overall width
			2,080 mm, 1,300 mm arm, 0.08 m ³ bucket, 315 kg counterweight		
300 mm	Cab	Rubber	2,750 kg	26.4 kPa	1,550 mm
		Metal	2,750 kg	26.4 kPa	1,550 mm
	Canopy	Rubber	2,680 kg	25.8 kPa	1,550 mm

ARM DIMENSIONS

Description	
Arm	1,300 mm
Length	1,603 mm
Height	423 mm
Width	156 mm
Weight	83.6 kg

Includes cylinder, linkage and pin.

BOOM DIMENSIONS

Description	
Boom	2,080 mm
Length	2,160 mm
Height	730 mm
Width	242 mm
Weight	104.5 kg

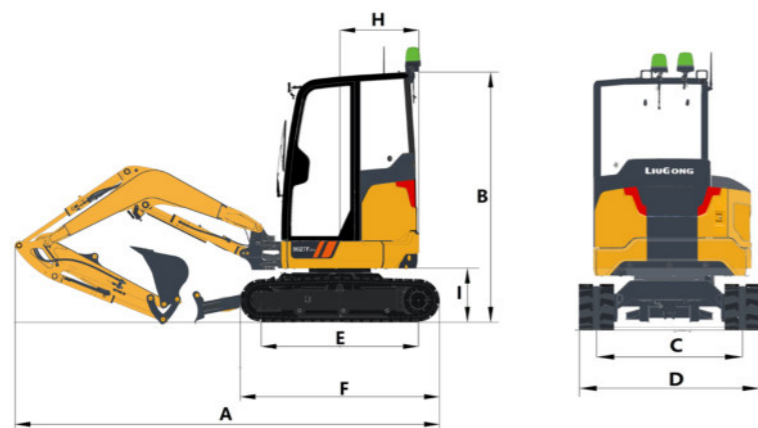
Includes cylinder, piping and pin, excludes boom cylinder pin.

BUCKET SELECTION GUIDE

Bucket Type	Capacity	Cutting Width	Weight	Teeth pcs	2,080 mm Boom
					1,300 mm Arm
General Purpose	0.08 m ³	567 mm	61 kg	4	A/B
	0.09 m ³	1,000 mm	65 kg	0	A
	0.05 m ³	400 mm	45 kg	3	B
	0.02 m ³	234 mm	39 kg	2	B

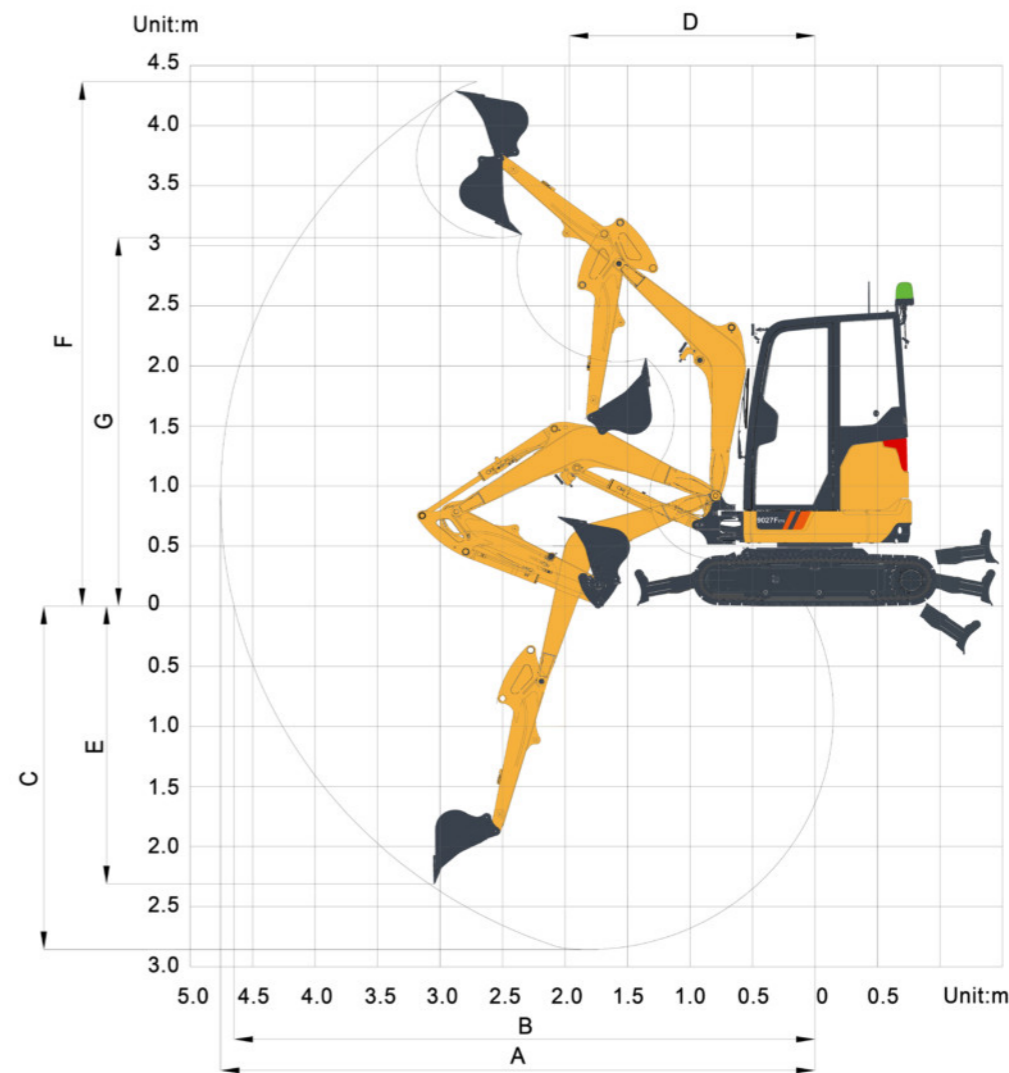
The recommendations are given as a guide only, based on typical operation conditions. Bucket capacity based on ISO 7451, heaped material with a 1: 1 angle of repose.

Maximum material density:
 A. 1,200-1,300 kg/m³ : Coal, Caliche, Shale
 B. 1,400-1,600 kg/m³ : Wet earth and clay, limestone, sandstone
 C. 1,700-1,800 kg/m³ : Granite, wet sand, well blasted rock
 D. 1,900 kg/m³ : Wet mud, Iron ore
 NA. Not applicable



DIMENSIONS

Boom	2,080 mm
Arm Options	1,300 mm
A Shipping Length	4,160 mm
B Shipping Height	2,450 mm
C Track Gauge	1,250 mm
D Undercarriage Width	1,550 mm
E Length to Center of Rollers	1,540 mm
F Track Length	1,953 mm
G Track Shoe Width	300 mm
H Tail Swing Radius	775 mm
I Counterweight Ground Clearance	530 mm
Overall Height of Cab	2,450 mm
Min. Ground Clearance	295 mm
Overall Width of Upper Structure	1,350 mm
Distance Between The Working Device And Swing Center--Right	694 mm
Distance Between The Working Device And Swing Center--Left	498 mm
Maximum Boom Swing Angle to the Right	54.5°
Maximum Boom Swing Angle to the Left	74°



WORKING RANGE

Boom Length	2,080 mm
Arm Options	1,300 mm
A. Max. Digging Reach	4,757 mm
B. Max. Digging Reach on Ground	4,648 mm
C. Max. Digging Depth	2,857 mm
D. Max. Vertical Wall Digging Depth	2,312 mm
E. Max. Cutting Height	4,365 mm
F. Max. Dumping Height	3,067 mm
G. Min. Front Swing Radius	1,965 mm
Max. Digging Depth, 2.5 m level	2,386 mm
Blade up	350 mm
Blade down	400 mm
Bucket Digging Force (ISO)	23.6 kN
Arm Digging Force (ISO)	23.6 kN
Bucket Capacity	0.08 m ³
Bucket Tip Radius	662 mm

Lifting capacity at the arm end without bucket.
For lifting capacity including bucket, weight of the bucket or the bucket with quick coupler must be deducted from the lifting capacities.
Lifting capacities are based on the machine standing on a firm, uniform supporting surface.



Rating over-front (Cf) Rating over-side (Cs)

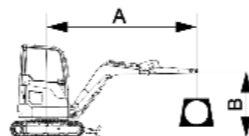
- Do not attempt to lift or hold any load that is greater than these rated values at their specified load radius and height. Weight of all accessories must be deducted from the above lifting capacities.
- The rated loads are in compliance with ISO 10567 Hydraulic Excavator Lift Capacity Rating Standard. They do not exceed 87% of hydraulic lifting capacity or 75% tipping load.
- Ratings at bucket lift hook.
- Lifting capacities are based on machine standing on level, firm and uniform ground.
- *Indicates the load is limited by hydraulic capacity rather than tipping capacity.
- Operator should be fully acquainted with the Operator's and Maintenance Instructions before operating this machine and rules for the safe operation of equipment should be adhered to at all times.

LIFTING CAPACITY (METRIC)

9027F_{ZTS} with 300 mm Shoes, 2,080 mm Boom, 1,300 mm Arm

Conditions

Boom length: 2,080 mm
Arm length: 1,300 mm
Shoes: 300 mm
Bucket: None
Unit: kg



A (Blade Up)

B (m)		2.0 m		2.5 m		3.0 m		3.5 m		MAX REACH		
		Cf	Cs	Cf	Cs	Cf	Cs	Cf	Cs	Cf	Cs	A (m)
2.0 m	kg					*460	*470	456	362	430	350	3.9
1.0 m	kg	1,026	777	724	562	553	433	442	348	351	277	4.1
Ground Level	kg	1,020	860	690	529	570	480	460	390	380	320	4.0
-1.0 m	kg	977	732	685	525	526	408			433	339	3.5

A (Blade Down)

B (m)		2.0 m		2.5 m		3.0 m		3.5 m		MAX REACH		
		Cf	Cs	Cf	Cs	Cf	Cs	Cf	Cs	Cf	Cs	A (m)
2.0 m	kg					*460	*470	*569	*362	*480	350	3.9
1.0 m	kg	*1,382	777	*951	562	*761	433	*657	348	*584	277	4.1
Ground Level	kg	*1,270	900	*1,150	529	*690	480	*520	400	*520	320	4.0
-1.0 m	kg	*1,436	732	*1,061	525	*817	408			*619	339	3.5

STANDARD EQUIPMENT

ENGINE SYSTEM

Engine Yanmar 3TNV80F-SSLY, Tier 4 Final / EU Stage V in line 3 cylinders, 4-stroke, water-cooled, natural aspiration
Automatic engine idle function
Air filter with pre-cleaner
Fuel pre-filter with water separator
Radiator, oil cooler, aftercooler, cooling fan drive - direct
Engine oil filter

DRIVETRAIN

Travel motors
2-speed travel system with automatic shift up and down

SWING SYSTEM

Zero tail swing
Piston swing motor
Piston swing motor with automatic release brake

HYDRAULIC SYSTEM

Main pump; axial piston pump
Dual way auxiliary line, with proportional joystick control
Valve-controlled auxiliary circuit (one or two way)
Attachment rotation line with flow adjustment
Quick Coupler lines, high pressure
Quick-coupler warning
Cylinders: boom, stick, bucket
Load holding valves: boom, arm, dozer blade cylinders

OPERATOR STATION

Cab, TOPS (ISO 12117) and ROPS (ISO 3471)
Mechanical suspension vinyl seat with 2 inch retractable seatbelt
Heater, defroster
AM/FM radio with MP3 audio jack
Floor mat
Fire extinguisher, 1 kg
One Liugong key for all locks
Cup holder
Travel levers and pedals
Dozer control lever with integrated travel button
Rear view mirrors, left-hand and right-hand side

INSTRUMENTATION

Digital instrument panel
Warning indicators of engine oil pressure, low fuel level, overheating, air filter
Service hour meter
Fuel level gauge
Coolant level gauge - ground level

ELECTRICAL SYSTEM

Alternator 40 A
One battery 12 V
LED working lights, 1 boom mounted, 2 front cab mounted
Rear view mirrors, cab mounted, RH & LH
Travel alarm
Orange LED rotating beacon
Green seatbelt linked beacon
Secondary engine shutoff switch
12 V power outlet

UNDERCARRIAGE

Rollers, bottom - 4 each side
Track shoes, 300 mm, rubber
Dozer blade without float function (for touching the bucket)
2 mm under covers

BOOM AND ARM

Boom, 2080 mm
Arm, 1300 mm

OTHERS

Standard counterweight, 312 kg
Manuals, parts and operator's
iLink telematics, includes 2-year subscription

OPTIONAL EQUIPMENT

OPERATOR STATION

Canopy, TOPS (Tip-over Protective Structure)
Cab with air conditioner, heater and defroster

ATTACHMENT

308 mm general purpose bucket (0.035 m³)
458 mm general purpose bucket (0.06 m³)
608 mm general purpose bucket (0.086 m³)
1203 mm grading bucket (0.11 m³)
Mechanical quick coupler (Miller - Pin Grabber)
Hydraulic quick coupler (Miller - Pin Grabber)
LiuGong LGB53 Hydraulic Breaker

UNDERCARRIAGE

Track shoes, 300 mm, steel, triple grouser

OTHERS

Additional Weight: 77 kg



Guangxi LiuGong Machinery Co., Ltd.
No. 1 Liutai Road, Liuzhou, Guangxi 545007, PR China
T: +86 772 388 6124 E: overseas@liugong.com
www.liugong.com

Like and follow us:



LG-PB-9027FzTs-Stage V-A4-072025-ENG

The LiuGong series of logos herein, including but not limited to word marks, device marks, letter of alphabet marks and combination marks, as the registered trademarks of Guangxi LiuGong Group Co., Ltd. are used by Guangxi LiuGong Machinery Co., Ltd. with legal permission, and shall not be used without permission. Specifications and designs are subject to change without notice. Illustrations and pictures may include optional equipment and may not include all standard equipment. Equipment and options varies by regional availability.