

**LIUGONG**

# 870HE



<b>BATTERY TYPE</b>	LFP
<b>RATED STORAGE ENERGY</b>	423 kWh
<b>OPERATING WEIGHT</b>	24,640 kg
<b>STANDARD BUCKET SIZE</b>	4.7 m <sup>3</sup>
<b>STANDARD BREAKOUT FORCE</b>	221 kN
<b>STANDARD DUMP CLEARANCE</b>	3,101 mm



B A T T E R Y   E L E C T R I C   V E H I C L E

TOUGH WORLD. TOUGH EQUIPMENT.

# CHANGE FOR THE BETTER

## LET'S TALK CHANGE

If you are reading this, then in all probability you are considering making the change to electric machines.

But how do you go about it? Who offers the best machines, support and advice? Who offers the best total cost of ownership? What kind of return on investment can you expect?

As a leader in electric machine and infrastructure technology, we believe we can guide you through every step of your change to electric.

## WHY ELECTRIC?

Fully electric? Hybrid? Alternative fuel transmissions?

Making the change from diesel presents a number of options and LiuGong have fully evaluated all of the above and more before deciding on electric as the best option.

### DECARBONIZATION

Reaching our target with electric technology

# CO<sub>2</sub>

### BETTER EFFICIENCY

Work efficiency increases by

# 20%

compared with the diesel alternative

### BETTER ECONOMY

**1** electric unit can save

**170 L** of fuel per day\*

That equates to over **42,500 L** of fuel per year\*\*, saving up to

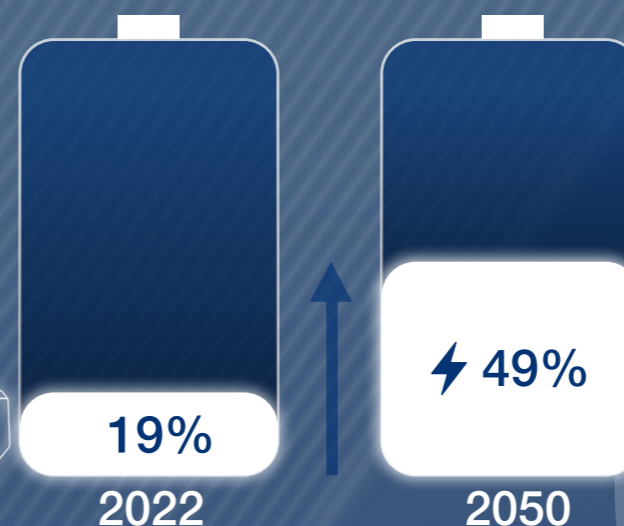
**11.3 t** of carbon emissions.

\*based on 10 hours at 17L/hour.  
\*\*based on 2,500 hours/year

## WHY CHANGE NOW?

Our global priorities for energy are changing rapidly, with the adoption of electric power accelerating beyond all other sources. For our customers, changing to electric is a strategic change for the better.

At LiuGong, we can relate to this. We want to be a better global citizen and help make life better for everyone. This thinking has shaped our investment and transformation into a leader in electric capability.



Our energy priorities are changing fast.

Now is the time to change for the better. Together we can help reduce CO<sub>2</sub> emissions by over

# 50 MILLION TON



# A WORLD LEADING BEV RANGE

WITH MORE THAN 90 PRODUCTS ALREADY LAUNCHED, WE OFFER A WORLD LEADING BEV RANGE.

As a leader in BEVs, we have launched over 90 electric products, offering a solution for nearly every application and segment, including mining machinery, industrial and port equipment, agricultural machinery, and more.

## WE HAVE AN ELECTRIC SOLUTION FOR EVERY APPLICATION

Covering 11 product lines, including loaders, excavators, mining trucks, aerial work platforms, industrial vehicles, and agricultural machinery, our BEVs fully encompass the three major technological routes including pure electric, extended-range, and battery swap.

## THE WORLD TRUSTS OUR GREEN MACHINES

With over 13,000 machines already sold globally in regions such as Asia-Pacific, Europe, North America and Latin America, our BEV machines are building a reputation for simplicity, reliability and performance.



WHEEL LOADERS



EXCAVATORS



MINING TRUCKS



MOTOR GRADERS



ROLLERS



SKID STEER LOADERS



REACH STACKERS



FORKLIFTS



AERIAL WORK PLATFORMS

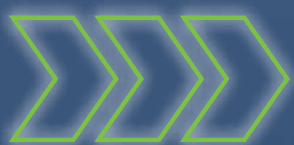


HYBRID TRACTORS



TELESCOPIC HANDLERS

# LET'S MEET THE GREEN 870HE



Please confirm the availability of product lines and models with your local dealer.



# NEW 870HE

## AN INTELLIGENT SOLUTION FOR A TOUGH WORLD



To justify the change to electric, BEVs must outperform conventional machines. Our new 870HE is all the justification you need. It's a machine with proven performance in the areas you really care about.



### POWER & BATTERY PERFORMANCE

Working with world-leading battery manufacturer CATL, the 870HE is powered by a 423 kWh large capacity lithium iron phosphate battery.

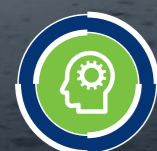
- Intelligent battery management system
- 9-hour working time capacity (light applications) & 6-hour (heavy applications)
- 90-min charging time capability (240 kW charging power, SOC12% ~ 95%)
- Level 3 safety leakage protection, ensuring the safety of operators



### PLUG & PLAY SIMPLICITY

We help you change to electric by offering a simple a plug & play solution, perfectly matched to deliver the optimum performance, economy and safety.

- Compliant with charging interfaces such as CCS1, CCS2, GB, etc.
- Mobile or stationary charging posts with multiple charging powers
- Health and safety training and support



### INTELLIGENCE & CONTROL

Our intelligent, human centric design creates a superior operator experience.

- Load-sensing hydraulics
- EAT700 transmission with electro-proportional valve for fast and smooth shifting
- Independent control of dual-motor drive for maximum hydraulic lift



### SAFETY & COMFORT

- The cab is designed around the operator, providing wide cab space, the highest level of safety, visibility and comfort.
- Heat and air conditioning + micro-supercharged cab to significantly reduce dust and noise pollution
- FOPS & ROPS protection
- Automatic door control lights, electrically adjustable mirrors + blind spot mirrors for improved manoeuvrability.



### ENVIRONMENTALLY FRIENDLY

Heavyweight performance with environmental responsibility.

- Zero Fuel
- Zero Emissions
- Lower noise & vibrations



### GUARANTEED RELIABILITY

We already have over 3,000 electric wheel loaders operating in the toughest conditions, so we go further to give you peace of mind.

- 5-year or 10,000-hour warranty (for battery) as standard
- IP67 rated wiring harness
- Waterproof integrated battery package

Machine's runtime data is based on a comprehensive evaluation and is provided for reference only. The actual runtime performance may vary depending on specific operating conditions.

# CHANGE FOR INTELLIGENT PERFORMANCE



## WORK SMARTER. NOT HARDER

The 870HE gives you the option to specify LiuGong's Intelligent Shovelling System. This smart technology automatically carries out repetitive shovelling cycles reducing operator fatigue.



## ENERGY RECOVERY

An independently developed energy recovery system, which enables reverse charging to the battery during gear shifting or braking, resulting in a 15% overall energy savings and extending the battery life.



## AUTOMATIC CONTROL

LiuGong's electric control box linked to an electric proportional transmission with a direct connection to the travel motor delivers the optimum torque with minimum energy. This smart solution improves transmission efficiency by more than 20% compared with conventional machines.



## INTELLIGENT APPLICATION

With a variety of intelligent functions to improve operational efficiency and comfort, handle steering can reduce the cumbersome control of the steering wheel, pan lifting can improve the efficiency of wood/steel pipe transfer, electronic control quick-change a key to change the appliance is convenient and quick.



## OPTIMIZED BATTERY PERFORMANCE

With intelligent temperature control, the 870HE cools and protects with unrivalled efficiency. The fan has independent control and can operate automatically in forward and reverse rotation. Keeping the battery working temperature of between 20°C and 35°C. Batter performance.



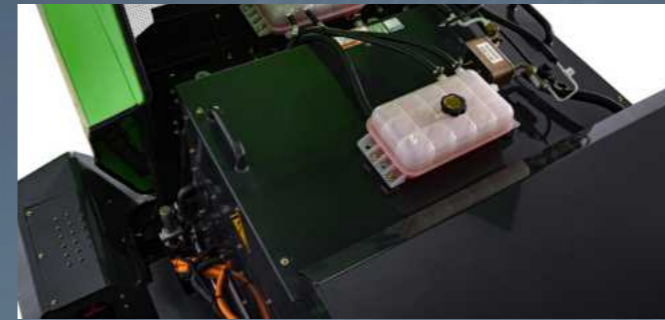
## MULTIPLE CHARGING PORTS

The 870HE supports a variety of charging interfaces, including CCS1, CCS2, GB, etc., and can achieve a charging power up to 300kW, recharged during the lunch break, and can be used longer in the afternoon.





# CHANGE FOR A SAFER SOLUTION



## SAFETY WITHOUT COMPROMISE

With active and passive safety protection our aim is to create the safest working environment yet. Designed around the operator, our cab provides the highest levels of safety, visibility and comfort. ROPS protection, advanced battery technology and excellent overall construction all combine to create zero tolerance for accidents in or around the machine. No one protects you or the environment more.



## SAFE AND SECURE

Our approach to battery management is simple. We keep our batteries safe, secure and in top condition to give you performance you can rely on.



## SAFETY FIRST

Our charging gun has been designed with simplicity and safety in mind and prevents the operator from potential electrical hazards such as shocks, short circuits and over-charging. It's a simple, safe solution that gets you back on the job, fast.



## IP67 ASSURANCE

Every electrical component on the 870HE meets the IP67 standard for dust-proof and waterproof performance. As you would expect, the battery packs easily meet the IP67 standard and have been designed to withstand the harshest working environments of extreme heat and humidity.



# CHANGE FOR COMFORT



## COMFORTABLE EVERYTHING

The overall layout is redesigned, with more legroom and adjustable seat space, providing the operator with a spacious and comfortable operating space. Electronically controlled joystick, front and rear up and down follower armrest box, front and rear up and down adjustable steering wheel, easier to operate and adapt. Air suspension electrically heated seats designed to keep the operator comfortable. standard DAB radio, Bluetooth function, can be in the break time to provide entertainment environment, reduce operating fatigue. It is also equipped with an advanced climate control system with eight all-round ventilation openings, 12 selection modes.



## NO VIBRATIONS

The machine is designed with a battery and overall structure that can withstand high-intensity vibrations based on application conditions. This ensures the protection of the battery system, even in the most adverse conditions, guaranteeing worry-free safety during machine operations.





# CHANGE FOR 'PLUG & PLAY' SIMPLICITY



## PLUG & PLAY SIMPLICITY

We help you change to electric by offering a simple plug-and-play solution, perfectly matched to deliver the optimum performance, economy and safety.



## POWER & BATTERY PERFORMANCE

We've made the change to electric easy with an 'all-in-one unit' powertrain, designed for optimum simplicity and performance, and an intelligent battery management system for a safe and easy charging solution.



## ALL IN ONE POWERTRAIN

Our All-In-One Powertrain seamlessly integrates controller, travel motor, transmission, drive axle controller, and hydraulic motor and pump into a single system. That means maximum power with maximum efficiency.



## SUPERIOR BATTERY PERFORMANCE

Working with world-leading battery manufacturer CATL, the 870HE is powered by a 423 kWh large capacity lithium iron phosphate battery. Delivering:

- 9-hour working time capability (light applications) & 6-hour working time capability (heavy applications)
- 90-min charging time capability (240 kW charging pile, SOC12% ~ 95%)



up to

**9 HOURS**

working time in light applications



up to

**6 HOURS**

working time in heavy applications



**1.5 HOURS**

240 kW charging pile



Machine's runtime data is based on a comprehensive evaluation and is provided for reference only. The actual runtime performance may vary depending on specific operating conditions.

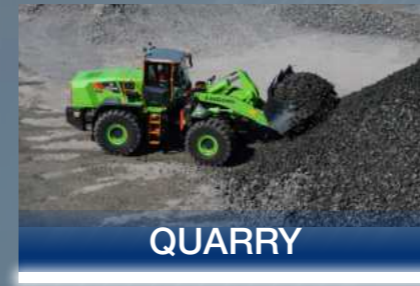


# CHANGE WITH CONFIDENCE



## GUARANTEED RELIABILITY

As you would expect, the 870HE has reliability built in. The machine has been proven to be reliable in harsh working conditions such as 4300m above sea level, tunnels, ports, and sand and coal fields, meeting the needs of various working conditions. In addition, the IP67-rated wiring harness adds extra protection to the battery, motor and electronic control system and a waterproof integrated battery package keeps the battery safe in wet conditions or during jet wash cleaning. But we go further to guarantee your peace of mind. Our new 870HE comes with a 5-year or 10,000-hour (for battery) warranty as standard. This is not a sales gimmick. This guarantee underlines the confidence we have in our electric machines.



QUARRY



STEEL MILLS



CEMENT PLANTS



SAND PLANTS



# 5 YEARS 10,000 HOURS WARRANTY

# CHANGE FOR BETTER RETURN ON INVESTMENT

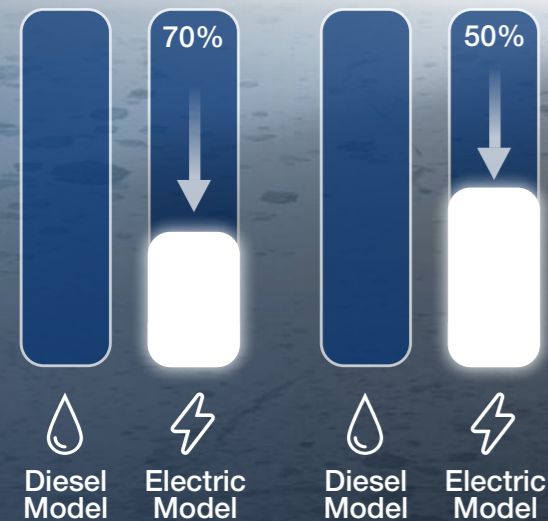


## DIESEL VS ELECTRIC?

This is the big question. In a straight cost-per-ton comparison, changing to electric makes sense on the job site and on the balance sheet. Diesel wheel loaders use 1 litre of oil, while electric wheel loaders use only 3 kWh of electricity.

## LOW TOTAL COST OF OWNERSHIP

- Permanent magnet synchronous motor
- Maintenance-free battery



up to **70%** reduction in operation costs over 5 years

up to **50%** reduction in maintenance costs over 5 years



## SLASHES OPERATIONAL & MAINTENANCE COSTS

Not guesswork – but cold, hard fact, gleaned from over 200 customer job sites. Our detailed analysis proves that our electric machines reduce 5-year operational costs by up to 70% and maintenance costs by up to 50%.

Add to the five-year or 10,000-hour warranty of Liugong (for battery, motor, controller), the 870HE promises exceptional return on investment.



## RECHARGES WHILE YOU WORK

It would be impossible for a conventional machine to create its own diesel, but Liugong's intelligent energy recovery system actually charges the battery as you work. This smart technology saves up to 20% of energy and keeps you working longer between charges.





# 870HE

## SPECIFICATIONS >>>

**Operating weight** 24,640 kg

Operating weight includes the machine weight with standard work device, no additional equipment or accessories, full fuel tank, all fluids at required level and an operator 75 kg.

**Bucket capacity range** 3.0-7.0 m<sup>3</sup>

### POWER BATTERY

#### Description

Battery Type: lithium iron phosphate batteries  
Drive motors & hydraulic motors: Made by INOVANCE  
Ambient Temperature: -40~85°C .

Manufacturer CATL

Model LFP

Rated Storage Energy 423 kWh

Nominal Voltage 618 V

Battery box protection level IP68

Control box protection level IP67

Cooling method Intelligent temperature control, liquid cooling

DC Charging CCS2, 300 kW

Charging time (240 kW charging pile) ≤ 90 min (SOC12% ~ 95%)

### TRANSMISSION

#### Description

Transmission: LiuGong EAT700 planetary, power shift transmission, with an integrated pilot single joystick and FNR. The electric proportional valve provides a smooth and continuous variation in flow ensuring fast response when shifting.

Number of Speeds: Forward 2, reverse 1

Transmission type Planetary electronically controlled shift

Maximum travel speed, fwd 40 km/h

Maximum travel speed, rev 14 km/h

Number of speed, fwd 2

Number of speed, rev 1

### HYDRAULIC SYSTEM

#### Description

System Supply: A variable displacement piston work pump and a variable displacement piston steering pump. Steering always takes priority.

Valves: Patented closed median main control valve.

Lift Function: The valve has four positions: lift, hold, lower, and float. Inductive/magnetic automatic boom kick-out can be switched on and off and is adjustable to two positions: bucket at ground Level and maximum reach full lifting height.

Tilt Function: Realize compound action - boom lifting and discharging simultaneously. Cylinders: Double-acting cylinders for all functions.

Main pump type Variable displacement pump

Controls Electric proportional joystick control

Main relief pressure 28 MPa

Raise 5.2 s

Dump time 1.3 s

Float down time 3.0 s

Fastest total cycle time 9.5 s

3rd function valve maximum flow 450 L/min

### STEERING

Steering configuration Articulated

Steering relief pressure 21 MPa

Maximum flow 100 L/min

Steering cylinders 2

Cylinder bore 90 mm

Rod diameter 50 mm

Stroke 465 mm

### DRIVE MOTOR

Power 160 kW

Ambient temperature -40~85°C

Adaptive altitude ≤ \*5,000 m

### AXLES

Front and rear axle reduction ratio 27.75

Axle oscillation ±9.5°

### ELECTRICAL SYSTEM

#### Description

The central warning system includes central warning light and buzzer for the following functions: power battery fault alarm, motor fault alarm, insulation fault alarm, charger connection alarm, shutdown alarm, etc. When working, the central warning light and buzzer are used for the following functions: power battery & travel motor & hydraulic motor temperature display, battery power display, brake low pressure alarm, parking brake indicator, transmission oil pressure alarm, etc.

Voltage DC 24 V

Batteries 2×12 V

Battery capacity at 20h rate 120 Ah

Cold cranking capacity at -18°C 850 A

Reserve capacity 224 min

### SOUND & ENVIRONMENT

Sound level in cab (stationary work cycle mode) according to iso 6396-2008/en iso 3744-1996 68 dB

External sound level (stationary work cycle mode) according to iso 6396-2008 102 dB

Ventilation 600 m<sup>3</sup>/h

Heating capacity 7 kW

Refrigerating Capacity 5.5 kW

### BRAKES

#### Description

New electro-hydraulic proportional braking system

Service brake type Full hydraulic

Parking brake type Drum

Parking brake actuation Hydraulic cylinder brake

### CAB

#### Description

Instrumentation: All important information is centrally located in the central instrument panel and operator's field of vision. Large curved front window glass and rear mirrors ensure great visibility.

Adjustable steering column, high back seat, armrest box and A/C with all-around air outlets are provided as standard.

Pressurized cab with lower interior noise. The cab is tested and approved according to ROPS (ISO 3471), FOPS (ISO 3449).

### DIMENSIONS

E Ground clearance 424 mm

G Wheelbase 3,715 mm

H Cab height 3,550 mm

J Wheel tread 2,300 mm

K Width over tires 2,995 mm

L Length with bucket down 9,145 mm

M Turn angle, either side 38°

P Rear angle of departure 28°

R1 Turning radius, bucket carry 7,577 mm

R2 Turning radius, outside of tire 6,946 mm

W Width over bucket 3,210 mm

### SERVICE CAPACITY

Cooling system 45 L

Hydraulic system 284 L

Transmission and torque converter 23 L

Axles, front/rear 63 L/63 L

### STANDARD LIFT LOADER ARM PERFORMANCE WITH STANDARD BUCKET AT 4.7 m<sup>3</sup> WITH BOLT-ON CUTTING EDGE AND OPERATING WEIGHT AT 24,640 kg.

Tipping load - straight (ISO 14397-1:2007) 19,000 kg

Tipping load - full turn (ISO 14397-1:2007) 16,800 kg

Bucket breakout force 221 kN

A Maximum hinge pin height 4,470 mm

B Dump clearance at full height discharge 3,101 mm

C Dump reach at full height discharge 1,257 mm

D Maximum digging depth, bucket level 60 mm

S1 Bucket rollback at ground level 45°

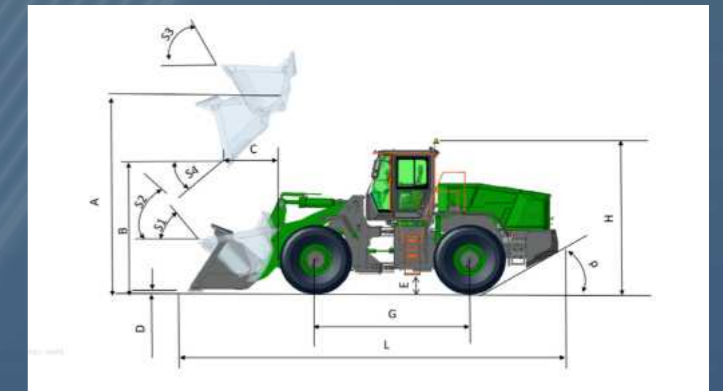
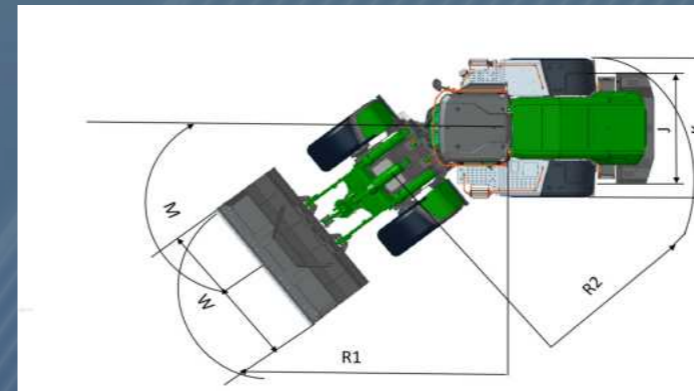
S2 Bucket rollback at carry 50°

S3 Bucket rollback at maximum height 58°

S4 Maximum dump angle at full height 45°

### TIRES

Tire size 26.5R25 ★ L-3





TIRES									
Choosing the right tyres for your machine will become a key competitive advantage to achieve outstanding performance. Through close engineering and development cooperation with renowned and carefully selected suppliers, LiuGong can offer full range of tyres specially tailored for wheel loader.									
Code	Application	Patterns	Size	PR / *	Tube Type	Width	Overall Diameter	Tread Depth	Load Capacity
L3	<ul style="list-style-type: none"> <li>In sand operation</li> <li>In all kind of load/carry operation</li> <li>The L3-tread is not as open as L2 and has consequently less self-cleansing compared with an L2 tire</li> </ul>		26.5R25	*	TL	675 mm	1,750 mm	35 mm	9,000 kg / 15,000 kg (50 km/h / 10 km/h)
L4	<ul style="list-style-type: none"> <li>In very aggressive material where good protection against cut damages is demanded, e.g. in quarries or mines</li> </ul>		26.5R25	**	TL	660 mm	1,730 mm	56 mm	11,500 kg / 18,500 kg (50 km/h / 10 km/h)
L5	<ul style="list-style-type: none"> <li>In very aggressive material where good protection against cut damages is demanded, e.g. in quarries or mines</li> </ul>		26.5R25	**	TL	690 mm	1,800 mm	78.5 mm	11,500 kg / 18,500 kg (50 km/h / 10 km/h)

Note: The radial tire-load bearing capacity is indicated by the number of stars (\*). More stars, greater radial tire-load bearing capacity. For the specific radial tire sizes listed in the table above, 2 stars (\*\*) represents the maximum radial tire-load bearing capacity.

Tires	Operating Weight, kg	Tipping Load- Full Turn, kg	
		Standard Arm	Long Arm
L3	-	-	-
L4	+374	+248	+234
L5	+800	+530	+501

Counterweight	Operating Weight, kg	Tipping Load- Full Turn, kg	
		Standard Arm	Long Arm
Standard	-	-	-
Additional	+290	+556	+508

ATTACHMENTS						
LiuGong attachments with pin-on or quick-coupler ensure high quality as the machine. Integrated design of the whole system makes a perfect match to achieve the superior productivity. For more information on other available attachments, please contact your LiuGong dealer for details.						
870HE	Type	4.2 m³ bucket (BOCE)	4.2 m³ bucket (BOT)	4.7 m³ bucket (BOCE)	5.2 m³ bucket (BOCE)	
Bucket	Bucket Capacity	m³	4.2	4.2	4.7	5.2
	Bucket Type	/	GP	GP	GP	GP
	Bucket Mounting	/	PIN-ON	PIN-ON	PIN-ON	PIN-ON
	GET Type	/	BOCE	BOT	BOCE	BOCE
	Bucket Weight	kg	2,224	2,149	2,373	2,460
Standard Arm	Operating Weight	kg	25,250	25,126	25,835	26,595
	Breakout Force	kN	191	199	182	182
	Tipping Load - Straight	kg	18,952	19,210	18,745	18,795
	Tipping Load - Full Turn	kg	16,755	16,997	16,552	16,583
	Max.Bucket Hinge Pin Height	mm	4,471	4,471	4,471	4,471
	Dump Clearance	mm	3,144	3,208	3,102	3,102
	Dump Reach	mm	1,215	1,208	1,257	1,257
	Overall Length	mm	8,832	9,019	8,892	8,892
	Overall Width	mm	3,050	3,210	3,160	3,360
	Overall Height	mm	3,550	3,550	3,550	3,550
	Turning Radius, Outside of Bucket	mm	7,482	7,626	7,571	7,664
Long Arm	Operating Weight	kg	25,400	25,276	25,985	26,745
	Breakout Force	kN	183	190	174	174
	Tipping Load - Straight	kg	16,932	17,161	16,731	16,752
	Tipping Load - Full Turn	kg	14,934	15,150	14,737	14,742
	Max.Bucket Hinge Pin Height	mm	4,823	4,823	4,823	4,823
	Dump Clearance	mm	3,496	3,560	3,454	3,454
	Dump Reach	mm	1,146	1,139	1,188	1,188
	Overall Length	mm	9,100	9,288	9,160	9,160
	Overall Width	mm	3,050	3,210	3,160	3,360
	Overall Height	mm	3,550	3,550	3,550	3,550
	Turning Radius, Outside of Bucket	mm	7,577	7,721	7,666	7,757



**ATTACHMENTS**

LiuGong attachments with pin-on or quick-coupler ensure high quality as the machine. Integrated design of the whole system makes a perfect match to achieve the superior productivity. For more information on other available attachments, please contact your LiuGong dealer for details.

870HE	Type		4.2 m <sup>3</sup> bucket (QC, BOCE)	4.5 m <sup>3</sup> bucket (QC, BOCE)
Bucket	Bucket Capacity	m <sup>3</sup>	4.2	4.5
	Bucket Type	/	GP	GP
	Bucket Mounting	/	QC	QC
	GET Type	/	BOCE	BOCE
	Bucket Weight	kg	1,830	2,108
Standard Arm	Operating Weight	kg	25,475	26,597
	Breakout Force	kN	177	152
	Tipping Load - Straight	kg	17,354	16,676
	Tipping Load - Full Turn	kg	15,317	14,681
	Max. Bucket Hinge Pin Height	mm	4,471	4,471
	Dump Clearance	mm	3,023	2,850
	Dump Reach	mm	1,211	1,347
	Overall Length	mm	9,032	9,269
	Overall Width	mm	3,160	3,050
	Overall Height	mm	3,550	3,550
Turning Radius, Outside of Bucket	mm	7,616	7,608	
Long Arm	Operating Weight	kg	25,625	26,747
	Breakout Force	kN	170	146
	Tipping Load - Straight	kg	15,600	14,991
	Tipping Load - Full Turn	kg	13,734	13,161
	Max. Bucket Hinge Pin Height	mm	4,823	4,823
	Dump Clearance	mm	3,375	3,202
	Dump Reach	mm	1,142	1,278
	Overall Length	mm	9,294	9,529
	Overall Width	mm	3,160	3,050
	Overall Height	mm	3,550	3,550
Turning Radius, Outside of Bucket	mm	7,713	7,709	

**ATTACHMENTS**

LiuGong attachments with pin-on or quick-coupler ensure high quality as the machine. Integrated design of the whole system makes a perfect match to achieve the superior productivity. For more information on other available attachments, please contact your LiuGong dealer for details.

870HE	Type		4.7 m <sup>3</sup> bucket (QC, BOCE)	4.7 m <sup>3</sup> bucket (QC, BOT, BOS)	5.2 m <sup>3</sup> bucket (QC, BOCE) (curved edge)
Bucket	Bucket Capacity	m <sup>3</sup>	2.7	3.2	5.2
	Bucket Type	/	GP	GP	GP
	Bucket Mounting	/	QC	QC	QC
	GET Type	/	BOCE	BOT, BOS	BOCE
	Bucket Weight	kg	2,161	2,200	2,284
Standard Arm	Operating Weight	kg	26,300	26,255	26,695
	Breakout Force	kN	152	151	150
	Tipping Load - Straight	kg	16,623	16,676	16,429
	Tipping Load - Full Turn	kg	14,629	14,686	14,436
	Max. Bucket Hinge Pin Height	mm	4,471	4,471	4,471
	Dump Clearance	mm	2,850	2,842	2,842
	Dump Reach	mm	1,347	1,349	1,349
	Overall Length	mm	9,269	9,418	9,201
	Overall Width	mm	3,160	3,210	3,360
	Overall Height	mm	3,550	3,550	3,550
Turning Radius, Outside of Bucket	mm	7,681	7,744	7,750	
Long Arm	Operating Weight	kg	26,450	26,405	26,845
	Breakout Force	kN	146	145	144
	Tipping Load - Straight	kg	14,938	15,002	14,741
	Tipping Load - Full Turn	kg	13,108	13,176	12,913
	Max. Bucket Hinge Pin Height	mm	4,823	4,823	4,823
	Dump Clearance	mm	3,202	3,194	3,194
	Dump Reach	mm	1,278	1,280	1,280
	Overall Length	mm	9,529	9,679	9,464
	Overall Width	mm	3,160	3,210	3,360
	Overall Height	mm	3,550	3,550	3,550
Turning Radius, Outside of Bucket	mm	7,781	7,846	7,848	

# STANDARD EQUIPMENT

## POWER SYSTEM

- CATL battery, WEITELI drive motor and hydraulic motor
- Intelligent temperature-controlled liquid cooling
- Electronic controlled fan with automatically speed adjustment, and auto reversing functions

## TRANSMISSION

- LiuGong EAT700 automatic planetary electric control transmission

## AXLE

- LiuGong wet axles
- Front & rear limited slip differentials

## HYDRAULIC SYSTEM

- Closed-center variable displacement load sensing system
- 3-spool main valve
- Integrated pilot single joystick with FNR

## STEERING SYSTEM

- Load sensing system with flow amplification and steering priority
- Secondary steering system

## TIRE & RIM

- Radial tire, 26.5R25 ★ L-3

- Tire nozzle protection

## CHASSIS FRAME

- Spacious central articulation arrangement with bevel bearing
- Articulation locking bar
- Tow hitch

## OPERATOR STATION

- Pressurized cab, with FOPS&ROPS
- Four-way adjustable steering column
- Air-suspension seat, electrically heated, high back, armrest, headrest, multi-direction adjustable
- Full LCD front instrument panel
- Indicators: high & low beams, locking status, parking brake, direction, lubrication system, battery charging, operation ready, etc.
- AC system
- Instrument: voltage, motor speed, fault code, SOC, battery temperature, hour meter, etc.
- Fresh air circulation system
- Electrically heated rearview mirrors
- Front and rear sun visors
- Back-up alarm
- Rear view camera
- Electric horn
- Fire extinguisher
- Cab rear windshield defroster
- Rotating beacon
- One button start

## OTHERS

- Automatic centralized lubrication
- Fenders
- Liugong telematics
- Light protective guard
- Boom supporting brackets

# OPTIONAL EQUIPMENT

## HYDRAULIC SYSTEM

- Ride control
- Load holding valve

## TYRE & RIM

- Bias, tube tire
- Wide base tire

## OPERATOR STATION

- Cab dust removal device
- 360 panoramic view camera
- Backup radar
- Steering joystick
- Payload

## LINKAGE & ATTACHMENTS

- Quick coupler
- High/extra-high linkage
- Rock bucket
- Side dump bucket
- High dump bucket
- Grapple

## PROTECTIVE DEVICE

- Chassis guard
- Protection guard of cab
- Tire chain

## OTHERS

- Low temperature package
- Landfill package
- HID lamp (Top of cab)

LiuGong standard and optional equipment may vary from region to region. Please consult your LiuGong dealer for information specific to your area.



# A TEAM YOU CAN TRUST



TALK TO US TODAY

T: +86 772 3886124  
E: [overseas@liugong.com](mailto:overseas@liugong.com)  
[www.liugong.com](http://www.liugong.com)



**Guangxi Liugong Machinery Co., Ltd.**

No. 1 Liutai Road, Liuzhou, Guangxi 545007, PR China  
T: +86 772 3886124 E: overseas@liugong.com  
www.liugong.com

**LG-PB-870HE-423kWh-A4-32P-032026-ENG**



The Liugong series of logos herein, including but not limited to word marks, device marks, letter of alphabet marks and combination marks, as the registered trademarks of Guangxi Liugong Group Co., Ltd. are used by Guangxi Liugong Machinery Co., Ltd. with legal permission, and shall not be used without permission. Specifications and designs are subject to change without notice. Illustrations and pictures may include optional equipment and may not include all standard equipment. Equipment and options varies by regional availability.