

**LIUGONG**

# 870T WHEEL LOADER

**T-SERIES**

Engine	Cummins L9
Max. Gross Power	210 kW
Operating Weight	23,778 - 27,442 kg
Bucket Capacities	3.0 - 7.0 m <sup>3</sup>



**TOUGH WORLD. TOUGH EQUIPMENT.**

# CUSTOMER DRIVEN DESIGN...

For over 65 years, LiuGong has built machines that thrive in the toughest environments. The 870T, part of our advanced T-Series, is engineered for maximum power, precision, and durability.

Designed to excel in demanding applications, this machine combines cutting-edge technology with proven reliability to keep you working efficiently in even the harshest conditions.

Since launching our first wheel loader in 1966, we've remained committed to innovation, ensuring every LiuGong machine is built to perform, wherever the job takes you.



## YOUR PERFORMANCE DASHBOARD

Research tells us that 6 key performance areas really matter to you. We'd like to use this performance dashboard to present the real, tough facts about our 870T.



**POWER & EFFICIENCY**



**TOUGHNESS & DURABILITY**



**SAFETY & VISIBILITY**



**UPTIME & MAINTENANCE**



**INTELLIGENCE & CONTROL**



**COMFORT & ERGONOMICS**

## THIS IS LIUGONG



**65+**  
YEARS  
EST 1958



**30+**  
PRODUCT LINES



**12**  
GLOBAL R&D CENTERS



**30+**  
GLOBAL OFFICES



**16,000+**  
EMPLOYEES



**20+**  
GLOBAL MANUFACTURING FACILITIES

## A RANGE YOU CAN TRUST.

From construction, aggregates, mixing plant, coal mines and industrial, you can trust the 870T to deliver. With the power, performance and adaptability you need to take on the toughest challenges, our T-Series machines won't let you down.



# LET'S TAKE A CLOSER LOOK...



## POWER THAT DRIVES PRODUCTIVITY

Advanced power shift transmission and intelligent fuel management system deliver uncompromised power with enhanced efficiency.

- ▶ Cummins L9 EU Stage V engine delivers robust power and superior fuel economy.
- ▶ Programmable auto-idle shutdown feature reduces fuel consumption during idle periods.
- ▶ ZF powershift provides faster acceleration and faster cycle times.
- ▶ Close-center, variable-displacement hydraulic system ensures optimum performance, minimizing energy loss while boosting fuel efficiency and productivity.
- ▶ Automatic temperature-controlled, reversible hydraulic fan adjusts its speed based on ambient temperature and cooling demand, improving engine efficiency and reducing fuel consumption.



## TOUGHER BY DESIGN

Engineered for extreme conditions, 870T's heavy-duty components maximize reliability and extend machine life.

- ▶ LiuGong heavy-duty wet axle with limited-slip differentials is engineered to handle heavy loads with ease even on the most rugged terrain.
- ▶ Highly durable chassis frame is built tough and rigorously tested to withstand the most extreme environments.
- ▶ Reinforced boom structure provides enhanced durability for heavy-duty operations.
- ▶ High-strength bucket delivers powerful performance and an extended service life.



## ENHANCED PROTECTION, SUPERIOR VISIBILITY

LiuGong prioritises operator safety and visibility to improve awareness and reduce risks on-site.

- ▶ 120° front visibility provides excellent field of view to the front of machine.
- ▶ All-round lighting delivers exceptional visibility for night operations and low-light conditions.
- ▶ Electric adjustable external rearview mirrors with integrated blind spot mirrors ensure optimal side and rear visibility in any job site conditions.
- ▶ Full LED work lights are standard-fitted for enhanced night-time visibility.
- ▶ 360° panoramic view system provides operators with a real-time, all-around view of surroundings, eliminating blind spots.
- ▶ Ergonomically-designed orange steps and handrails safeguard the operator during access, exit and maintenance.



## BUILT TO LAST, EASY TO MAINTAIN

To maximize your productive hours, we've made the New 870T even easier to maintain and surrounded it with service back-up and support to make every productive second count.

- ▶ Electric lift tilt-back engine hood provides quick and easy access to both the engine compartment and routine service points for easy maintenance.
- ▶ Centralized greasing system extends bearing life and reduces maintenance time and costs by delivering precise amounts of grease to each bearing at regular intervals.
- ▶ Fluid drains provide environmentally friendly drainage capability and are grouped together for convenient serviceability.
- ▶ Under hood lights facilitate component inspection and maintenance in low-light conditions.
- ▶ Battery master switch is optimally positioned below the cab access ladder for easy operation when entering or exiting the cab.
- ▶ Easy to replace cab filters accessed via secondary access steps.



## INTELLIGENT PERFORMANCE, DESIGNED TO WORK SMARTER

Smart control systems ensure precision, efficiency, and adaptability across different applications.

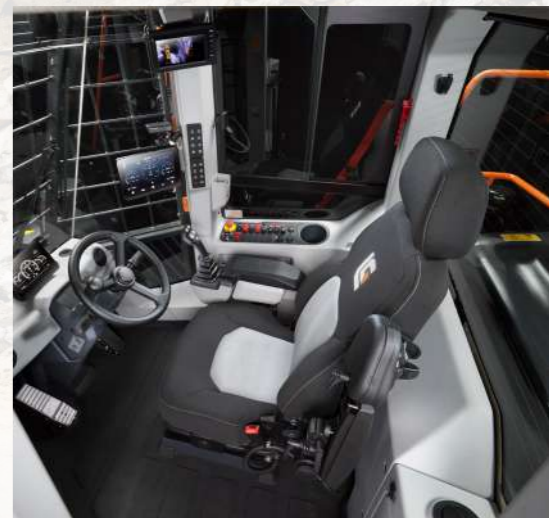
- ▶ Graphical display integrated multiple functions and parameter settings facilitates the machine to handle various applications.
- ▶ Automatic boom height kick-out and bucket leveling can be easily activated with a single touch in the cab.
- ▶ Electric quick coupler enables operators to change attachments in seconds from the cab, enhancing safety and productivity.
- ▶ One-touch engine start/stop allows for effortless operation with a single touch.
- ▶ LiuGong payload system delivers real-time load measurement, optimizing operational efficiency for optimal haulage cost control.



## BUILT AROUND YOU

LiuGong machines are designed with the operator at the heart, ensuring all-day comfort and convenience.

- ▶ Pressurized, ROPS/FOPS certified cab is spacious, quiet, and engineered for all-day comfort with ergonomic, intuitive controls.
- ▶ Full LCD instrument panel features a precise, intuitive interface, and user-friendly design, ensuring that all critical parameters are clearly visible at a glance.
- ▶ Advanced climate control system with 12 all-around vents and intelligent temperature control ensures an optimal operating temperature in all conditions.
- ▶ Standard telescopic & tiltable steering column and ergonomic armrest accommodate various operating habits to reduce fatigue.
- ▶ Air suspension seat with adjustable armrests and headrest features electric heating as standard and ventilation & heating functions to further enhance comfort.



# 870T SPECIFICATIONS

Operating Weight	23,778 - 27,442 kg
Operating weight includes the machine weight with standard work device, no additional equipment or accessories, full fuel, DEF tank and all fluids at required level and an operator 75 kg.	
Bucket Capacity	3.0 - 7.0 m <sup>3</sup>

ENGINE	
Emission Regulation	EU Stage V
Make	Cummins
Model	L9
Engine Output - Max.Gross (SAE J1995 / ISO 14396)	210 kW @ 2,100 rpm
Engine Output - Max.Net (SAE J1349 / ISO 9249)	199 kW @ 2,100 rpm
Peak Torque	1,525 N.m @ 1,100 rpm
Displacement	8.9 L
Number of Cylinders	6
Aspiration	Turbocharged & Air-to-air intercooled

TRANSMISSION	
Transmission Type	Countershaft, power shift
Torque Converter	Single stage, three elements
Max. Travel Speed Forward / Reverse (26.5R25 tires)	38 / 25.4 km/h
Number of Speed, fwd/rev	4 / 3

HYDRAULIC SYSTEM	
Main Pump Type	Piston
Main Relief Pressure	30 MPa
Raise	5.8 s
Dump Time	1.3 s
Float Down Time	3.5 s
Hydraulic Cycle Time	10.6 s
Controls	Joystick

AXLES	
Model	LiuGong (Wet type)-AWL700
Differential Front Type	Limited slip
Differential Rear Type	Limited slip
Axle Oscillation	±10°

STEERING	
Steering Hydraulic System Type	Flow amplifying
Steering Relief Pressure	25 Mpa
Maximum Articulation	±38°
Smallest Turn (over tires)	6,795 mm

BRAKES	
Service Brake Type	Wet discs brake
Service Brake Actuation	Full hydraulic
Parking Brake Type	Drum
Parking Brake Actuation	Electro-hydraulic release

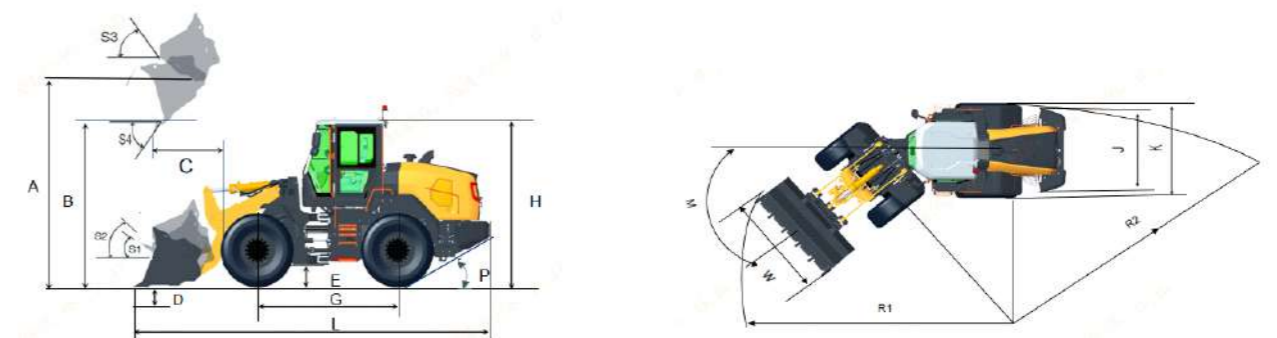
ELECTRICAL SYSTEM	
Voltage	24 V
Batteries	2X12 V
Battery Capacity	120 Ah
Cold Cranking Capacity, approx	850 CCA
Reserve Capacity	230 min
Alternator Rating	2,640 W / 110 A
Starter Motor Output	7.5 kW

SOUND & ENVIRONMENT	
Sound level in cab according to ISO 6396-2008/EN ISO 3744-1995 - Travel mode	69 dB(A)
Sound level in cab according to ISO 6396-2008/EN ISO 3744-1996 - Stationary work cycle mode	69 dB(A)
External sound level according to ISO 6395-2008- Travel mode	107 dB(A)
External sound level according to ISO 6395-2008- Stationary work cycle mode	107 dB(A)
Ventilation	9.3 m <sup>3</sup> /min
Heating capacity	7.5 kW
Air conditioning	5.3 kW

SERVICE REFILL CAPACITIES	
Fuel Tank	330 L
Engine Oil	22 L
Cooling System	35 L
Hydraulic System	270 L
Transmission and Torque Converter	35 L
DEF Tank	45 L
Axles, Front/Rear	52 L / 50 L

STANDARD LIFT LOADER ARM PERFORMANCE WITH BUCKET AT 4.2 m <sup>3</sup> WITH BOLT-ON TEETH & SPACER AND OPERATING WEIGHT AT 24,300 kg.	
Tipping Load - Straight according to ISO 14397-1:2007	18,630 kg
Tipping Load - Full Turn according to ISO 14397-1:2007	16,120 kg
Bucket Breakout Force	186 kN
A Maximum Hinge Pin Height	4,540 mm
B Dump Clearance at Full Height Discharge	3,249 mm
C Dump Reach at Full Height Discharge	1,175 mm
D Maximum Digging Depth, Bucket Level	95 mm
S <sub>1</sub> Bucket Rollback at Ground Level	44°
S <sub>2</sub> Bucket Rollback at Carry	46.2°
S <sub>3</sub> Bucket Rollback at Maximum Height	60.5°
S <sub>4</sub> Maximum Dump Angle at Full Height	45°

STANDARD LIFT LOADER ARM DIMENSIONS	
E Ground Clearance	450 mm
G Wheelbase	3,550 mm
H Cab Height	3,460 mm
J Wheel Tread	2,280 mm
K Width Over Tires	2,980 mm
L Length with Bucket Down	9,142 mm
M Turn Angle, Either Side	38°
P Rear Angle of Departure	29°
R <sub>1</sub> Turning Radius, Bucket Carry	7,536 mm
R <sub>2</sub> Turning Radius, Outside of Tire	6,795 mm
W Width over Bucket	3,210 mm



## TIRES

Choosing the right tyres for your machine will become a key competitive advantage to achieve outstanding performance. Through close engineering and development cooperation with renowned and carefully selected suppliers, LiuGong can offer full range of tyres specially tailored for wheel loader.

Code	Application	Patterns	Size	PR / *	Tube Type	Width	Overall Diameter	Tread Depth	Load Capacity
L3	<ul style="list-style-type: none"> <li>in sand operation</li> <li>in all kind of load/carry operation</li> <li>The L3-tread is not as open as L2 and has consequently less self-cleansing compared with an L2 tyre</li> </ul>		26.5R25	*	/	675 mm	1,750 mm	35 mm	15,000 kg
L4	<ul style="list-style-type: none"> <li>in sand operation</li> <li>in all kind of load/carry operation</li> <li>Wider and deeper tread than L3, offering better wear resistance and longer service life.</li> </ul>		26.5R25	**	/	660 mm	1,730 mm	56 mm	+3,500 kg
L5	<ul style="list-style-type: none"> <li>in very aggressive material where good protection against cut damages is demanded, e.g. in quarries or mines</li> </ul>		26.5R25	**	/	690 mm	1,800 mm	78.5 mm	+3,500 kg

Note: The radial tire-load bearing capacity is indicated by the number of stars (\*). More stars, greater radial tire-load bearing capacity. For the specific radial tire sizes listed in the table above, 2 stars (\*\*) represents the maximum radial tire-load bearing capacity.

Tire	Operating Weight, kg	Tipping Load- Full Turn, kg	
		Standard Arm	Long Arm
L3	-	-	-
L4	+ 374	+ 236	+ 216
L5	+ 800	+ 505	+ 462

Counterweight	Operating Weight, kg	Tipping Load- Full Turn, kg	
		Standard Arm	Long Arm
Standard	-	-	-
Additional	+ 474	+ 758 (QC)	+ 733 (QC)
		+ 788 (PIN-ON)	+ 759 (PIN-ON)

## ATTACHMENTS

LiuGong attachments with pin-on or quick-coupler ensure high quality as the machine. Integrated design of the whole system makes a perfect match to achieve the superior productivity. For more information on other available attachments, please contact your LiuGong dealer for details.

870T	4-Speed Transmission, L3 Tires	3.0 m³ Bucket (BOCE)	3.5 m³ Bucket (BOT)	3.7 m³ Bucket (BOCE)	3.7 m³ Bucket (BOT, BOS)	4.0 m³ Bucket (BOT)	4.2 m³ Bucket (BOCE)	
Bucket	Bucket Capacity	m³	3.0	3.5	3.7	3.7	4.2	
	Bucket Type	/	GP	GP	GP	GP	GP	
	Bucket Mounting	/	PIN-ON	PIN-ON	PIN-ON	PIN-ON	PIN-ON	
	GET Type	/	BOCE	BOT	BOCE	BOT, BOS	BOT	BOCE
	Bucket Weight	kg	1,979	1,767	1,932	1,933	2,118	2,300

Standard Arm	Operating Weight	kg	23,990	23,778	23,943	23,944	24,129	24,311
	Max. Breakout Force	kN	226	197	188	188	194	186
	Tipping Load - Straight	kg	18,890	19,026	18,806	18,802	18,839	18,591
	Tipping Load - Full Turn	kg	16,386	16,536	16,316	16,313	16,331	16,083
	Max. Bucket Hinge Pin Height	mm	4,540	4,540	4,540	4,540	4,540	4,540
	Dump Clearance	mm	3,405	3,316	3,253	3,253	3,313	3,249
	Dump Reach	mm	1,005	1,165	1,172	1,172	1,168	1,175
	Overall Length	mm	8,776	9,132	8,994	9,137	9,137	8,999
	Overall Width	mm	3,160	3,010	2,980	3,010	3,210	3,160
	Overall Height	mm	3,460	3,460	3,460	3,460	3,460	3,460
Turning Radius, Outside of Bucket	mm	7,413	7,442	7,380	7,444	7,534	7,473	

Long Arm	Operating Weight	kg	24,002	23,790	23,955	23,956	24,141	24,323
	Max. Breakout Force	kN	229	200	191	191	197	189
	Tipping Load - Straight	kg	17,046	17,181	16,964	16,961	16,962	16,721
	Tipping Load - Full Turn	kg	14,755	14,904	14,688	14,685	14,670	14,430
	Max. Bucket Hinge Pin Height	mm	4,882	4,882	4,882	4,882	4,882	4,882
	Dump Clearance	mm	3,747	3,659	3,595	3,595	3,655	3,591
	Dump Reach	mm	935	1,094	1,101	1,101	1,097	1,104
	Overall Length	mm	9,028	9,385	9,247	9,390	9,390	9,252
	Overall Width	mm	3,160	3,010	2,980	3,010	3,210	3,160
	Overall Height	mm	3,460	3,460	3,460	3,460	3,460	3,460
Turning Radius, Outside of Bucket	mm	7,511	7,547	7,483	7,549	7,638	7,575	

## ATTACHMENTS

LiuGong attachments with pin-on or quick-coupler ensure high quality as the machine. Integrated design of the whole system makes a perfect match to achieve the superior productivity. For more information on other available attachments, please contact your LiuGong dealer for details.

870T	4-Speed Transmission, L3 Tires	4.2 m³ Bucket (BOT)	4.2 m³ Bucket (BOT, BOS)	4.5 m³ Bucket (BOT)	4.7 m³ Bucket (BOCE)	4.7 m³ Bucket (BOT,BOS)	5.0 m³ Bucket (BOT)
	<b>Bucket Capacity</b>	m³	4.2	4.2	4.5	4.7	5.0
	<b>Bucket Type</b>	/	GP	GP	GP	GP	GP
<b>Bucket</b>	<b>Bucket Mounting</b>	/	PIN-ON	PIN-ON	PIN-ON	PIN-ON	PIN-ON
	<b>GET Type</b>	/	BOT	BOT, BOS	BOT	BOCE	BOT, BOS
	<b>Bucket Weight</b>	kg	2,151	2,289	2,193	2,375	2,264

<b>Standard Arm</b>	<b>Operating Weight</b>	kg	24,162	24,300	24,204	24,386	24,375	24,275
	<b>Max. Breakout Force</b>	kN	187	186	179	171	171	178
	<b>Tipping Load - Straight</b>	kg	18,724	18,630	18,606	18,349	18,368	18,536
	<b>Tipping Load - Full Turn</b>	kg	16,226	16,120	16,116	15,862	15,880	16,046
	<b>Max. Bucket Hinge Pin Height</b>	mm	4,540	4,540	4,540	4,540	4,540	4,540
	<b>Dump Clearance</b>	mm	3,277	3,249	3,235	3,171	3,171	3,235
	<b>Dump Reach</b>	mm	1,203	1,175	1,246	1,253	1,253	1,246
	<b>Overall Length</b>	mm	9,187	9,142	9,247	9,109	9,252	9,247
	<b>Overall Width</b>	mm	3,210	3,210	3,210	3,160	3,210	3,410
	<b>Overall Height</b>	mm	3,460	3,460	3,460	3,460	3,460	3,460
	<b>Turning Radius, Outside of Bucket</b>	mm	7,549	7,536	7,566	7,504	7,568	7,657

<b>Long Arm</b>	<b>Operating Weight</b>	kg	24,174	24,312	24,216	24,398	24,387	24,287
	<b>Max. Breakout Force</b>	kN	190	189	182	174	174	181
	<b>Tipping Load - Straight</b>	kg	16,856	16,751	16,745	16,496	16,515	16,675
	<b>Tipping Load - Full Turn</b>	kg	14,573	14,458	14,470	14,223	14,240	14,399
	<b>Max. Bucket Hinge Pin Height</b>	mm	4,882	4,882	4,882	4,882	4,882	4,882
	<b>Dump Clearance</b>	mm	3,620	3,591	3,577	3,513	3,513	3,577
	<b>Dump Reach</b>	mm	1,133	1,104	1,175	1,182	1,182	1,175
	<b>Overall Length</b>	mm	9,440	9,395	9,500	9,362	9,505	9,500
	<b>Overall Width</b>	mm	3,210	3,210	3,210	3,160	3,210	3,410
	<b>Overall Height</b>	mm	3,460	3,460	3,460	3,460	3,460	3,460
	<b>Turning Radius, Outside of Bucket</b>	mm	7,653	7,640	7,672	7,608	7,674	7,761

## ATTACHMENTS

LiuGong attachments with pin-on or quick-coupler ensure high quality as the machine. Integrated design of the whole system makes a perfect match to achieve the superior productivity. For more information on other available attachments, please contact your LiuGong dealer for details.

870T	4-Speed Transmission, L3 Tires	5.2 m³ Bucket (BOCE)	5.2 m³ Bucket (BOT,BOS)	5.5 m³ Bucket (BOT)	Rock Bucket	Rock Bucket	Slag Bucket	
	<b>Bucket Capacity</b>	m³	5.2	5.2	5.5	3.3	4.0	3.5
	<b>Bucket Type</b>	/	GP	GP	GP	GP	GP	GP
<b>Bucket</b>	<b>Bucket Mounting</b>	/	PIN-ON	PIN-ON	PIN-ON	PIN-ON	PIN-ON	PIN-ON
	<b>GET Type</b>	/	BOCE	BOT, BOS	BOT	BOT	BOT	BOCE
	<b>Bucket Weight</b>	kg	2,462	2,450	2,378	2,359	2,497	2,087

<b>Standard Arm</b>	<b>Operating Weight</b>	kg	24,473	24,461	24,389	24,370	24,508	24,098
	<b>Max. Breakout Force</b>	kN	171	171	172	204	189	188
	<b>Tipping Load - Straight</b>	kg	18,268	18,282	18,649	18,002	17,877	18,456
	<b>Tipping Load - Full Turn</b>	kg	15,779	15,792	16,133	15,561	15,435	15,995
	<b>Max. Bucket Hinge Pin Height</b>	mm	4,540	4,540	4,540	4,540	4,540	4,540
	<b>Dump Clearance</b>	mm	3,171	3,171	3,203	3,329	3,262	3,253
	<b>Dump Reach</b>	mm	1,253	1,253	1,278	1,081	1,148	1,172
	<b>Overall Length</b>	mm	9,109	9,252	9,292	9,040	9,135	8,994
	<b>Overall Width</b>	mm	3,360	3,410	3,410	3,323	3,323	2,980
	<b>Overall Height</b>	mm	3,460	3,460	3,460	3,460	3,460	3,460
	<b>Turning Radius, Outside of Bucket</b>	mm	7,595	7,659	7,670	7,563	7,589	7,389

<b>Long Arm</b>	<b>Operating Weight</b>	kg	24,485	24,473	24,401	24,382	24,520	24,110
	<b>Max. Breakout Force</b>	kN	173	173	175	207	192	190
	<b>Tipping Load - Straight</b>	kg	16,412	16,425	16,733	16,244	16,100	16,649
	<b>Tipping Load - Full Turn</b>	kg	14,137	14,150	14,438	14,006	13,863	14,396
	<b>Max. Bucket Hinge Pin Height</b>	mm	4,882	4,882	4,882	4,882	4,882	4,882
	<b>Dump Clearance</b>	mm	3,513	3,513	3,545	3,671	3,604	3,595
	<b>Dump Reach</b>	mm	1,182	1,182	1,207	1,010	1,078	1,101
	<b>Overall Length</b>	mm	9,362	9,505	9,545	9,291	9,386	9,247
	<b>Overall Width</b>	mm	3,360	3,410	3,410	3,323	3,323	2,980
	<b>Overall Height</b>	mm	3,460	3,460	3,460	3,460	3,460	3,460
	<b>Turning Radius, Outside of Bucket</b>	mm	7,698	7,764	7,775	7,664	7,693	7,491

**ATTACHMENTS**

LiuGong attachments with pin-on or quick-coupler ensure high quality as the machine. Integrated design of the whole system makes a perfect match to achieve the superior productivity. For more information on other available attachments, please contact your LiuGong dealer for details.

870T	4-Speed Transmission, L3 Tires	Light Material Bucket	Light Material Bucket	
Bucket	Bucket Capacity	m <sup>3</sup>	5.8	
	Bucket Type	/	GP	
	Bucket Mounting	/	PIN-ON	
	GET Type	/	BOCE	
	Bucket Weight	kg	2,576	
Standard Arm	Operating Weight	kg	24,587	
	Max. Breakout Force	kN	164	
	Tipping Load - Straight	kg	18,144	
	Tipping Load - Full Turn	kg	15,660	
	Max. Bucket Hinge Pin Height	mm	4,540	
	Dump Clearance	mm	3,139	
	Dump Reach	mm	1,285	
	Overall Length	mm	9,154	
	Overall Width	mm	3,360	
	Overall Height	mm	3,460	
	Turning Radius, Outside of Bucket	mm	7,608	
	Long Arm	Operating Weight	kg	24,599
		Max. Breakout Force	kN	167
Tipping Load - Straight		kg	16,271	
Tipping Load - Full Turn		kg	14,003	
Max. Bucket Hinge Pin Height		mm	4,882	
Dump Clearance		mm	3,482	
Dump Reach		mm	1,214	
Overall Length		mm	9,407	
Overall Width		mm	3,360	
Overall Height		mm	3,460	
Turning Radius, Outside of Bucket		mm	7,711	

**ATTACHMENTS**

LiuGong attachments with pin-on or quick-coupler ensure high quality as the machine. Integrated design of the whole system makes a perfect match to achieve the superior productivity. For more information on other available attachments, please contact your LiuGong dealer for details.

870T	4-Speed Transmission, L3 Tires	3.7 m <sup>3</sup> Bucket (QC, BOCE)	3.7m <sup>3</sup> Bucket (QC, BOT,BOS)	4.0m <sup>3</sup> Bucket (QC, BOT)	4.2m <sup>3</sup> Bucket (QC, BOCE)	4.2m <sup>3</sup> Bucket (QC, BOT,BOS)	5.0m <sup>3</sup> Bucket (QC, BOT)	
Bucket	Bucket Capacity	m <sup>3</sup>	3.7	3.7	4.0	4.2	5.0	
	Bucket Type	/	GP	GP	GP	GP	GP	
	Bucket Mounting	/	QC	QC	QC	QC	QC	
	GET Type	/	BOCE	BOCE	BOT	BOCE	BOT, BOS	
	Bucket Weight	kg	1,798	1,796	1,592	1,702	2,115	
Standard Arm	Operating Weight	kg	24,298	24,296	24,092	24,202	24,551	
	Max. Breakout Force	kN	158	158	175	168	149	
	Tipping Load - Straight	kg	16,884	16,902	17,300	17,165	16,470	
	Tipping Load - Full Turn	kg	14,594	14,610	14,994	14,858	14,205	
	Max. Bucket Hinge Pin Height	mm	4,540	4,540	4,540	4,540	4,540	
	Dump Clearance	mm	3,023	3,028	3,153	3,095	2,975	
	Dump Reach	mm	1,265	1,270	1,207	1,220	1,338	
	Overall Length	mm	9,287	9,421	9,350	9,192	9,576	
	Overall Width	mm	2,980	3,010	3,210	3,160	3,410	
	Overall Height	mm	3,460	3,460	3,460	3,460	3,460	
	Turning Radius, Outside of Bucket	mm	7,476	7,537	7,607	7,536	7,768	
	Long Arm	Operating Weight	kg	24,310	24,308	24,104	24,214	24,563
		Max. Breakout Force	kN	161	161	177	170	151
Tipping Load - Straight		kg	15,281	15,294	15,666	15,530	14,887	
Tipping Load - Full Turn		kg	13,175	13,186	13,547	13,409	12,803	
Max. Bucket Hinge Pin Height		mm	4,882	4,882	4,882	4,882	4,882	
Dump Clearance		mm	3,366	3,371	3,496	3,438	3,317	
Dump Reach		mm	1,194	1,199	1,137	1,149	1,267	
Overall Length		mm	9,534	9,669	9,597	9,440	9,823	
Overall Width		mm	2,980	3,010	3,210	3,160	3,410	
Overall Height		mm	3,460	3,460	3,460	3,460	3,460	
Turning Radius, Outside of Bucket		mm	7,585	7,648	7,715	7,642	7,879	

## STANDARD & OPTIONAL EQUIPMENT

ENGINE	
Cummins L9 EU Stage V Engine, output - Max. net power of 199 kW, air to-air intercooled, 6 cylinders, 4 stroke	<input checked="" type="checkbox"/>
High pressure common rail	<input checked="" type="checkbox"/>
Exhaust emission control	<input checked="" type="checkbox"/>
Rotary air filter, fuel filter	<input checked="" type="checkbox"/>
Hydraulically-driven reversible fan	<input checked="" type="checkbox"/>
Grid heater	<input checked="" type="checkbox"/>
Programmable auto engine idle stop	<input checked="" type="checkbox"/>
Pre-fuel filter/water separator with electric fuel pump	<input checked="" type="checkbox"/>
EFI (Electric Fuel Injection)	<input checked="" type="checkbox"/>
ECM faults inspecting system	<input checked="" type="checkbox"/>
Engine block heater	<input type="checkbox"/>
Wide-fin radiator	<input type="checkbox"/>
Cold start	<input type="checkbox"/>
Oil bath air filter	<input type="checkbox"/>

TRANSMISSION	
ZF Ergopower 4BP230 automatic power shift transmission, kick-down function, FNR, F4/R3	<input checked="" type="checkbox"/>
ICCO (Intelligent Clutch Cut-Off)	<input checked="" type="checkbox"/>
Transmission oil level sight gauge	<input checked="" type="checkbox"/>
Secondary oil filter, sight glass	<input checked="" type="checkbox"/>
Remote pressure taps for diagnostics	<input checked="" type="checkbox"/>
Auto shifting mode by speed	<input checked="" type="checkbox"/>
Neutral safety switch	<input checked="" type="checkbox"/>
Electronic controlled parking brake	<input checked="" type="checkbox"/>

LINKAGE & ATTACHMENTS	
Z-bar linkage	<input checked="" type="checkbox"/>
Bolt-on cutting edge	<input type="checkbox"/>
Bolt-on teeth	<input type="checkbox"/>
Bolt-on teeth & spacer	<input checked="" type="checkbox"/>
High lift loader arms	<input type="checkbox"/>
Electric quick coupler	<input checked="" type="checkbox"/>
Parallel-lift linkage	<input checked="" type="checkbox"/>
Pallet forks	<input type="checkbox"/>

HYDRAULIC SYSTEM	
Two piston pumps with variable displacement. Hydraulic load-sensing according to demand	<input checked="" type="checkbox"/>
Electric proportional controller	<input checked="" type="checkbox"/>
Third valve and multipurpose lines	<input checked="" type="checkbox"/>
2-spool hydraulics for dual auxiliary function	<input type="checkbox"/>
Joystick steering	<input type="checkbox"/>
Easy simultaneous operating of lift & tilt	<input checked="" type="checkbox"/>
Boom height kick-out	<input checked="" type="checkbox"/>
Bucket positioner	<input checked="" type="checkbox"/>
Plug at the port of bucket and boom cylinder for pressure check	<input checked="" type="checkbox"/>
Emergency boom lower via pilot accumulator	<input checked="" type="checkbox"/>
Load holding valve	<input type="checkbox"/>
Thermostat	<input type="checkbox"/>
Ride control	<input checked="" type="checkbox"/>

TYRE & RIM	
26.5R25*/L3 radial tire	<input checked="" type="checkbox"/>
Full fender	<input checked="" type="checkbox"/>
See tires options	<input type="checkbox"/>
Tire protective chain	<input type="checkbox"/>

CHASSIS FRAME	
Spacious central articulation arrangement with conic bearing	<input checked="" type="checkbox"/>
Articulation locking bar	<input checked="" type="checkbox"/>
Tow hitch	<input checked="" type="checkbox"/>
Rubber cushion articulation stops	<input checked="" type="checkbox"/>

AXLE	
LiuGong wet front & rear axle with limited slip differentials	<input checked="" type="checkbox"/>
Wet discs service brake system	<input checked="" type="checkbox"/>

STEERING SYSTEM	
Load sensing system with flow amplification and steering priority	<input checked="" type="checkbox"/>
Emergency steering system	<input checked="" type="checkbox"/>

## STANDARD & OPTIONAL EQUIPMENT

ELECTRIC SYSTEM	
Two front LED headlights with high & low beams and turn signal	<input checked="" type="checkbox"/>
Four front, two rear LED headlights on top of cab	<input checked="" type="checkbox"/>
Turn signals with flasher	<input checked="" type="checkbox"/>
Seat belt indicator	<input checked="" type="checkbox"/>
Batteries, free of maintenance	<input checked="" type="checkbox"/>
24 V power outlet	<input checked="" type="checkbox"/>
Electric horn	<input checked="" type="checkbox"/>
License-plate bracket and light	<input checked="" type="checkbox"/>
Rotating beacon / Multicolor flash light	<input checked="" type="checkbox"/>
Backup alarm with white noise	<input checked="" type="checkbox"/>
Front and rear windshield wiper	<input checked="" type="checkbox"/>
Electric lift back-tilt hood	<input checked="" type="checkbox"/>
Reversing warning light, orange/blue	<input checked="" type="checkbox"/>
Bluetooth radio/player with USB port	<input checked="" type="checkbox"/>

GAUGE GROUP	
Engine coolant temperature	<input checked="" type="checkbox"/>
Transmission oil temperature	<input checked="" type="checkbox"/>
Fuel level	<input checked="" type="checkbox"/>
Hour meter	<input checked="" type="checkbox"/>
Voltage	<input checked="" type="checkbox"/>
DEF pump working indicator	<input checked="" type="checkbox"/>

INDICATOR GROUP	
Air inlet heater	<input checked="" type="checkbox"/>
Battery charging	<input checked="" type="checkbox"/>
Intake air filter alert	<input checked="" type="checkbox"/>
Parking brake applied	<input checked="" type="checkbox"/>
Machine emergent stop	<input checked="" type="checkbox"/>
Power cut-off	<input checked="" type="checkbox"/>
Engine servicing	<input checked="" type="checkbox"/>
Turning lights	<input checked="" type="checkbox"/>
Engine starter running	<input checked="" type="checkbox"/>
Beam of front light	<input checked="" type="checkbox"/>

Note:  for standard equipment  
 for optional equipment

LiuGong standard and optional equipment may vary from region to region. Please consult your LiuGong dealer for information specific to your area.

CAB	
FOPS (ISO 3449) and ROPS (ISO 3471) certified cab	<input checked="" type="checkbox"/>
Heated and ventilated air suspension seat with 2-inch 3-point seatbelt	<input checked="" type="checkbox"/>
Electric heated, adjustable rear-view mirrors	<input checked="" type="checkbox"/>
One interior & dual exterior rear-view mirrors, blind spot mirrors	<input checked="" type="checkbox"/>
Telescopic & tiltable steering column	<input checked="" type="checkbox"/>
Large front glass	<input checked="" type="checkbox"/>
Cab with silicone oil damper	<input checked="" type="checkbox"/>
Cab fresh air filter	<input checked="" type="checkbox"/>
One-touch engine start/stop	<input checked="" type="checkbox"/>
Air conditioner	<input checked="" type="checkbox"/>
Lunch-box/cooler holder	<input checked="" type="checkbox"/>
Cup holder	<input checked="" type="checkbox"/>
Cab rear windshield defroster	<input checked="" type="checkbox"/>
Front and rear sun visors	<input checked="" type="checkbox"/>
Front windshield guarding	<input type="checkbox"/>
All-round lighting	<input type="checkbox"/>
360° panoramic view system	<input checked="" type="checkbox"/>
360° surround view with obstacle warning	<input type="checkbox"/>
Graphic display	<input checked="" type="checkbox"/>
Safety hammer	<input checked="" type="checkbox"/>

OTHERS	
Automatic central lubrication	<input checked="" type="checkbox"/>
Parking wedge	<input checked="" type="checkbox"/>
Rear light protective guard	<input checked="" type="checkbox"/>
Chassis guard	<input checked="" type="checkbox"/>
LiuGong payload system	<input checked="" type="checkbox"/>
LiuGong iLink (LiuGong Telematics System)	<input checked="" type="checkbox"/>
Fire extinguisher	<input checked="" type="checkbox"/>
Remote battery jump posts	<input checked="" type="checkbox"/>
Auto loading	<input checked="" type="checkbox"/>
Coupler ready	<input checked="" type="checkbox"/>
Rear bumper	<input type="checkbox"/>
Hood protective guard	<input type="checkbox"/>
Additional counterweight	<input type="checkbox"/>
Tire pressure monitoring	<input type="checkbox"/>



Guangxi LiuGong Machinery Co., Ltd.  
No. 1 Liutai Road, Liuzhou, Guangxi 545007, PR China  
T: +86 772 388 6124 E: overseas@liugong.com  
www.liugong.com

Like and follow us:



LG-PB-870T-Stage V-A4-092025-ENG

The LiuGong series of logos herein, including but not limited to word marks, device marks, letter of alphabet marks and combination marks, as the registered trademarks of Guangxi LiuGong Group Co., Ltd. are used by Guangxi LiuGong Machinery Co., Ltd. with legal permission, and shall not be used without permission. Specifications and designs are subject to change without notice. Illustrations and pictures may include optional equipment and may not include all standard equipment. Equipment and options varies by regional availability.